

SINGLE TENANT ABSOLUTE NNN

Investment Opportunity



2024 Construction | Opened June 27, 2024 | Brand New 20-Year Lease Term



3743 Reid Street

PALATKA FLORIDA

ACTUAL SITE



EXCLUSIVELY MARKETING BY



PATRICK NUTT

**EVP & Market Leader
National Net Lease**

patrick.nutt@srsre.com

D: 954.302.7365 | M: 703.434.2599

200 SW First Avenue, Suite 970

Fort Lauderdale, FL 33301

FL License No. BK3120739

WILLIAM WAMBLE

**Senior Vice President
National Net Lease**

william.wamble@srsre.com

D: 813.371.1079 | M: 813.434.8278

1501 W. Cleveland Street, Suite 300

Tampa, FL 33606

FL License No. SL3257920



NATIONAL NET LEASE

Qualifying Broker: Patrick Nutt, SRS Real Estate Partners-SOFLO LLC | FL License No. BK3120739



SITE PHOTOS



SITE PHOTOS





OFFERING

Pricing	\$4,947,000
Net Operating Income	\$235,000
Cap Rate	4.75%

PROPERTY SPECIFICATIONS

Property Address	3743 Reid Street Palatka, Florida 32177
Rentable Area	6,119 SF
Land Area	4.84 AC
Year Built	2024
Store Opened	June 27, 2024
Tenant	Wawa
Lease Signature	Corporate (Wawa Inc.)
Lease Type	Absolute NNN (Ground Lease)
Landlord Responsibilities	None
Lease Term	20 Years
Increases	5% Every 5 Years Starting LY 11
Options	6 (5-Year)
Rent Commencement	June 2024
Lease Expiration	June 2044

LEASE TERM						RENTAL RATES		
Tenant Name	SF	Lease Start	Lease End	Begin	Increase	Monthly	Annually	Options
Wawa	6,119	June 2024	June 2044	Year 1	-	\$19,583	\$235,000	6 (5-Year)
(Corporate Signature)				Year 11	5%	\$20,563	\$246,750	
				Year 16	5%	\$21,591	\$259,088	
5% Rental Increases Beg. of Each Option Thereafter								

Brand New Construction | Corporate Signature (Fitch: BBB) | Scheduled Rental Increases | Options to Extend

- The lease is corporate guaranteed by Wawa, Inc., an investment grade (Fitch: BBB), nationally recognized, and an established convenience store and gas brand with over 1,040+ locations
- Brand new 20-year ground lease with 6 (5-year) options to extend, demonstrating their long-term commitment to the site
- The ground lease features 5% rental increases every 5 years starting in lease year 11 and at the beginning of each option period
- There are 1,044 Wawa stores in the United States as of January 9, 2024

Absolute NNN Ground Lease | No State Income Tax | No Landlord Responsibilities | Land Ownership

- Tenant pays for CAM, taxes, insurance and maintains all aspects of the premises
- No landlord responsibilities
- Investor benefits from leased fee interest (land ownership)
- Ideal management-free investment in a state with no state income tax

Signalized, Hard Corner Intersection | Palatka Mall | Town & Country Shopping Center | Palatka High School

- Wawa is strategically located at the signalized, hard corner intersection of N State Road 19 and Reid Street averaging a combined 53,000 VPD
- The nearby retail developments include Palatka Mall and Town & Country Shopping Center
 - Town & Country Shopping Center ranks in the top 68% of all community shopping centers nationwide
 - Palatka Mall ranks in the top 65% of all strip/convenience centers nationwide
- The immediate trade area is supported by retailers such as Walmart Supercenter, The Home Depot, Publix, and more
- Just North of Palatka High School (1,067-students), providing a consumer base from which to draw

Local Demographics 5-Mile Trade Area

- More than 23,300 residents and 14,400 employees support the trade area
- Features an average household income of \$56,918

PROPERTY OVERVIEW



LOCATION



Palatka, Florida
Putnam County

ACCESS



State Highway 19: 2 Access Points
Reid Street/State Highway 100: 2 Access Points

TRAFFIC COUNTS



State Highway 19: 22,000 VPD
Reid Street/State Highway 100: 31,000 VPD
Crill Avenue/State Highway 20: 20,100 VPD

IMPROVEMENTS



There is approximately 6,119 SF of existing building area

PARKING



There are approximately 56 parking spaces on the owned parcel.
The parking ratio is approximately 9.15 stalls per 1,000 SF of leasable area.

PARCEL



Parcel Number: TBD
Acres: 4.84
Square Feet: 210,830

CONSTRUCTION



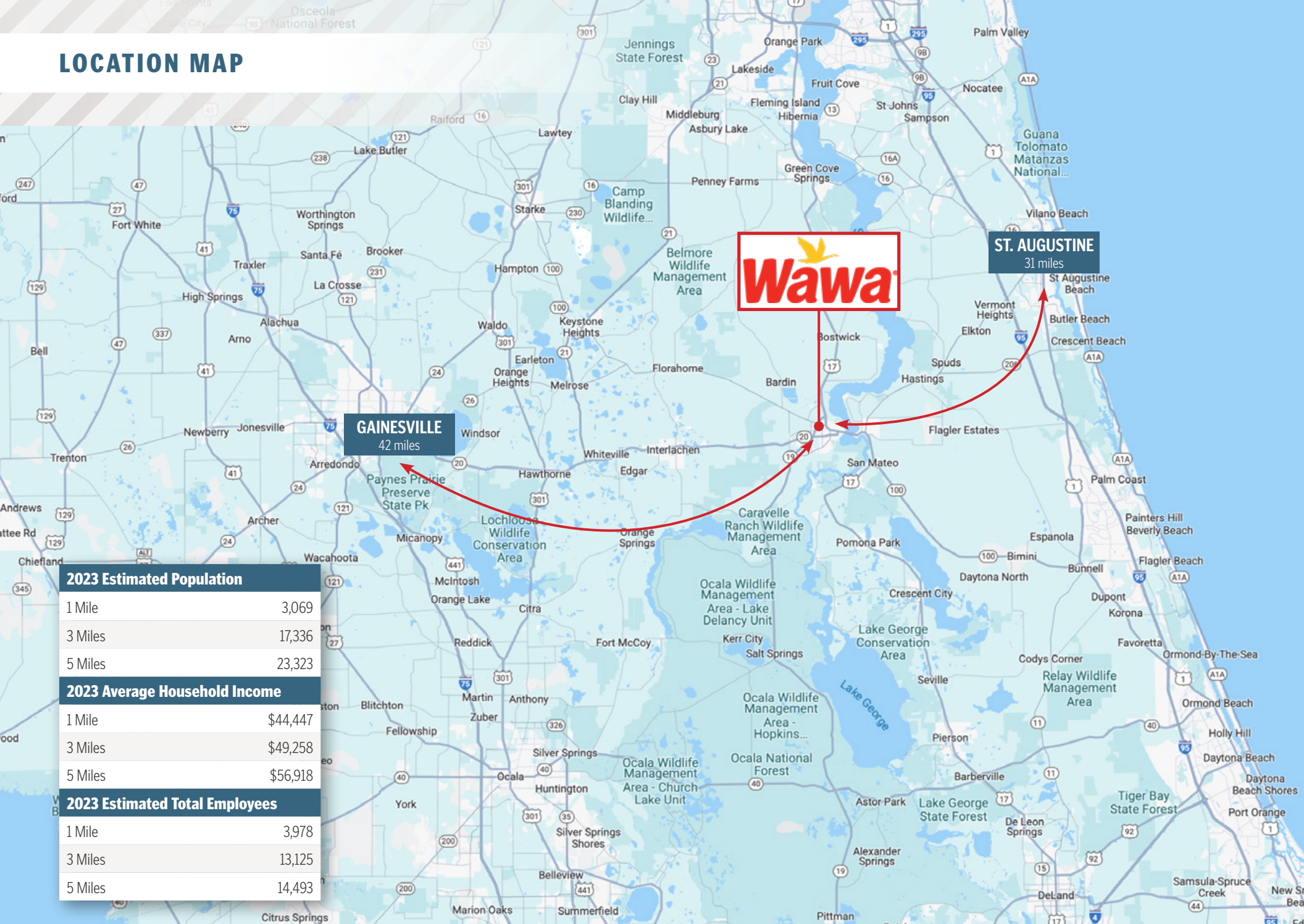
Year Built: 2024

ZONING



C-2

LOCATION MAP



2023 Estimated Population

1 Mile	3,069
3 Miles	17,336
5 Miles	23,323

2023 Average Household Income

1 Mile	\$44,447
3 Miles	\$49,258
5 Miles	\$56,918

2023 Estimated Total Employees

1 Mile	3,978
3 Miles	13,125
5 Miles	14,493







31,000
VEHICLES PER DAY

REID ST.

100

CIRCLE K

MONUMENT SIGN

MONUMENT SIGN

Wawa

Krystal

DOLLAR GENERAL

LONGHORN
STEAKHOUSE



22,000
VEHICLES PER DAY

100





BRAND PROFILE



WAWA

wawa.com

Company Type: Private

Locations: 1,044+

Wawa, Inc., a privately held company, began in 1803 as an iron foundry in New Jersey. Toward the end of the 19th Century, owner George Wood took an interest in dairy farming and the family began a small processing plant in Wawa, PA in 1902. The milk business was a huge success, due to its quality, cleanliness and "certified" process. As home delivery of milk declined in the early 1960s, Grahame Wood, George's grandson, opened the first Wawa Food Market in 1964 as an outlet for dairy products. Today, Wawa is customers all day, every day stop for freshly prepared foods, beverages, coffee, fuel services and surcharge-free ATMs. Wawa stores are located in Pennsylvania, New Jersey, Delaware, Maryland, Virginia, Florida and Washington, D.C. The stores offer a large fresh foodservice selection, including Wawa brands such as custom prepared hoagies, freshly-brewed coffee, hot breakfast sandwiches, hand crafted beverages and an assortment of soups, sides and snacks. There are 1,044 Wawa stores in the United States as of February 12, 2024.

Source: wawa.com, scrapehero.com

	1 Mile	3 Miles	5 Miles
Population			
2023 Estimated Population	3,069	17,336	23,323
2028 Projected Population	3,009	16,920	22,918
2023 Median Age	36.1	38.1	40.2
Households & Growth			
2023 Estimated Households	1,078	6,917	9,163
2028 Projected Households	1,069	6,823	9,094
Income			
2023 Estimated Average Household Income	\$44,447	\$49,258	\$56,918
2023 Estimated Median Household Income	\$23,798	\$29,638	\$32,900
Businesses & Employees			
2023 Estimated Total Businesses	313	1,172	1,320
2023 Estimated Total Employees	3,978	13,125	14,493



PALATKA, FLORIDA

Palatka, Florida is 41 miles E of Gainesville, Florida and 47 miles S of Jacksonville, Florida. It is in Putnam County. The city is also home to St. Johns River State College, St. Johns River Water Management District Headquarters, and Ravine Gardens State Park. The area is well known for its local festivals, most notably the Florida Azalea Festival and the Blue Crab Festival. Palatka has a 2024 population of 10,690.

The City of Palatka has a large portion of its economy based in the manufacturing and distribution sectors. This has been influenced by the access to transportation infrastructure in the Region. Georgia Pacific is the single largest private employer in the city. The Koch-owned firm employs 1,470 people at its pulp, paper, and plywood operations. PDM Bridge is another large manufacturing company operating in Palatka. Their facility is located in Barge Port on the St. Johns River. The Eau Claire, Wisconsin-based bridge builder utilizes the river for the transportation of its finished products. PDM Bridge is notable for the fabrication of the Woodrow Wilson Bridge structure. The construction industry in Palatka also provides a significant number of jobs, which will likely continue to grow as the community continues to develop. The City of Palatka, like most of Florida, also has a significant employment sector in the tourism industry and accommodation services. The City of Palatka is continuing to progress into a service-based economy, including retail trade, as it continues to evolve with the Region. Due to the recent growth of the public schools and the St. Johns River College, educational services have become one of the largest employment industries in the City of Palatka. Healthcare and public administration round out the remaining industries topping the list.

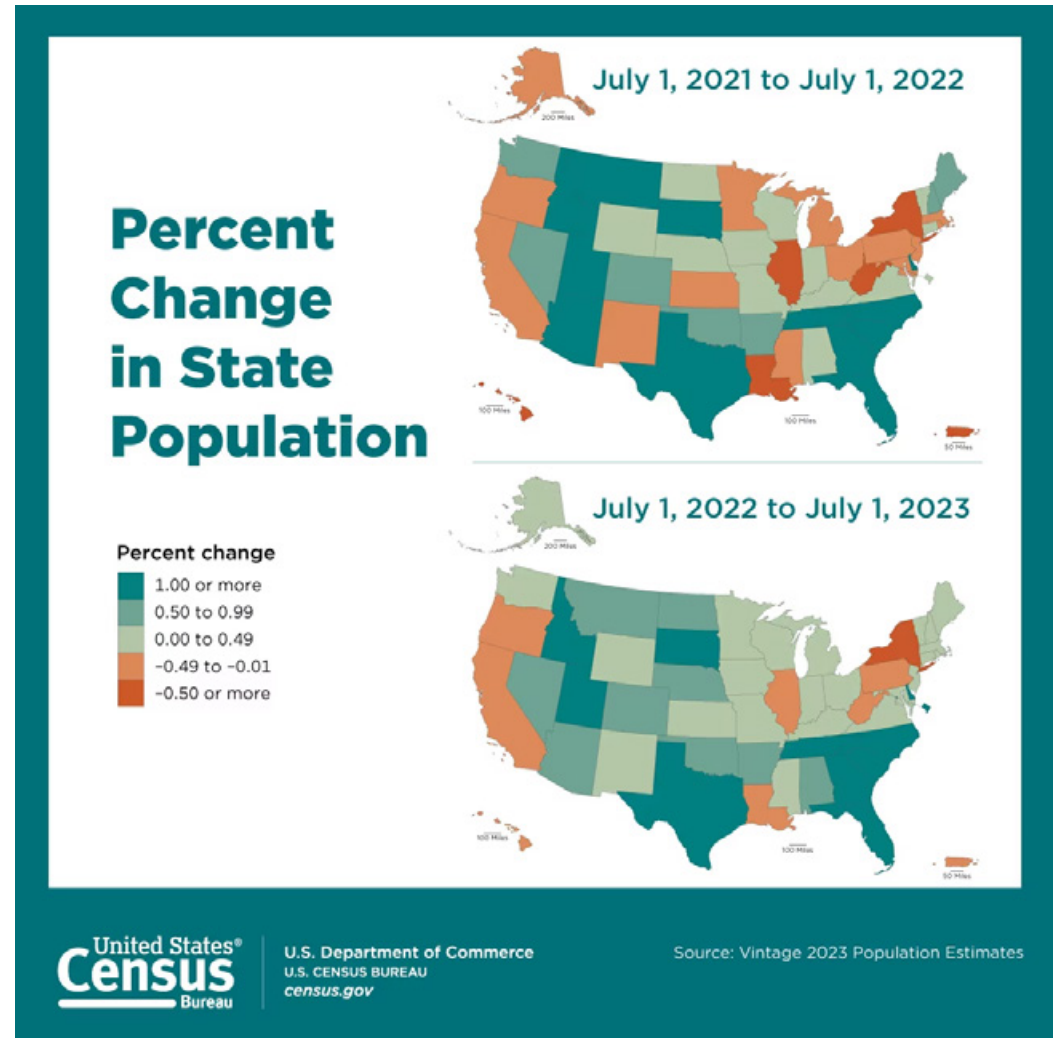
Palatka and nearby attractions are Bronson-Mulholland House, Angel's Dining Car, Putnam County Historical Society & Museum, Ravine Gardens State Park, Palatka Railroad Preservation Society. Palatka is known as "Bass Capital of the World." This is because the St. John's River, which flows through it, is abundant with many different varieties of bass fish. This makes fishing one of the major activities. Apart from that, people also indulge in sailing, boating, water skiing and swimming. The Florida trail attracts nature lovers who love hiking. There are two excellent golf courses.

The nearest major airport is St Augustine. This airport has domestic flights from Saint Augustine, Florida and is 33 miles from the center of Palatka, FL.

PERCENT CHANGE IN STATE POPULATION

Top 10 States by Numeric Growth: 2022 to 2023					
Rank	Geographic Area	April 1, 2020 (est. base)	July 1, 2022	July 1, 2023	Numeric Growth
1	Texas	29,145,459	30,029,848	30,503,301	473,453
2	Florida	21,538,216	22,245,521	22,610,726	365,205
3	North Carolina	10,439,459	10,695,965	10,835,491	139,526
4	Georgia	10,713,771	10,913,150	11,029,227	116,077
5	South Carolina	5,118,422	5,282,955	5,373,555	90,600
6	Tennessee	6,910,786	7,048,976	7,126,489	77,513
7	Arizona	7,157,902	7,365,684	7,431,344	65,660
8	Virginia	8,631,373	8,679,099	8,715,698	36,599
9	Colorado	5,773,707	5,841,039	5,877,610	36,571
10	Utah	3,271,614	3,381,236	3,417,734	36,498

Top 10 States or State Equivalent by Percent Growth: 2022 to 2023					
Rank	Geographic Area	April 1, 2020 (est. base)	July 1, 2022	July 1, 2023	Percent Growth
1	South Carolina	5,118,422	5,282,955	5,373,555	1.7%
2	Florida	21,538,216	22,245,521	22,610,726	1.6%
3	Texas	29,145,459	30,029,848	30,503,301	1.6%
4	Idaho	1,839,117	1,938,996	1,964,726	1.3%
5	North Carolina	10,439,459	10,695,965	10,835,491	1.3%
6	Delaware	989,946	1,019,459	1,031,890	1.2%
7	D.C.	689,548	670,949	678,972	1.2%
8	Tennessee	6,910,786	7,048,976	7,126,489	1.1%
9	Utah	3,271,614	3,381,236	3,417,734	1.1%
10	Georgia	10,713,771	10,913,150	11,029,227	1.1%



Source: United States Census Bureau
Read Full Article [HERE](#)
Posted on December 18, 2023



THE EXCLUSIVE NATIONAL NET LEASE TEAM

of SRS Real Estate Partners

300+

TEAM
MEMBERS

25+

OFFICES

2K+

RETAIL
TRANSACTIONS

company-wide
in 2023

510+

CAPITAL MARKETS
PROPERTIES

SOLD
in 2023

\$2.2B+

CAPITAL MARKETS
TRANSACTION

VALUE
in 2023

This document has been prepared by SRS Real Estate Partners (SRS) and has been approved for distribution by all necessary parties. Although effort has been made to provide accurate information, SRS and those represented by SRS make no guarantees, warranties, or representations as to the completeness of the materials presented herein or in any other written or oral communications transmitted or made available. Documents may have been referred to in summary form and these summaries do not purport to represent or constitute a legal analysis of the contents of the applicable documents. Neither SRS or those represented by SRS represent that this document is all inclusive or contains all of the information you may require. Any financial projections and/or conclusions presented herein are provided strictly for reference and have been developed based upon assumptions and conditions in effect at the time the evaluations were undertaken. They do not purport to reflect changes in economic performance, local market conditions, economic and demographic statistics, or further business activities since the date of preparation of this document. Recipients of this document are urged to undertake their own independent evaluation of the subject and/or asset(s) being shared in this document.