



For Sale

Retail Availability • 5,000 SF Former Advance Auto Parts

410 S Saginaw Road | Midland, MI

- 5,000 SF (50' by 100') Former Advance Auto Parts
- Cross Access/Parking with Dollar Tree
- Traffic Counts: 17,200 on Saginaw Rd & 6,900 on Rodd St
- Zoning: Regional Commercial (RC) with a Center City Overlay
- Signalized Intersection

Demographics

	1 MILE	3 MILE	5 MILE
POPULATION	9,849	36,098	51,122
AVG. INCOME	\$76,209	\$103,742	\$106,215
HOUSEHOLDS	4,730	15,431	21,316



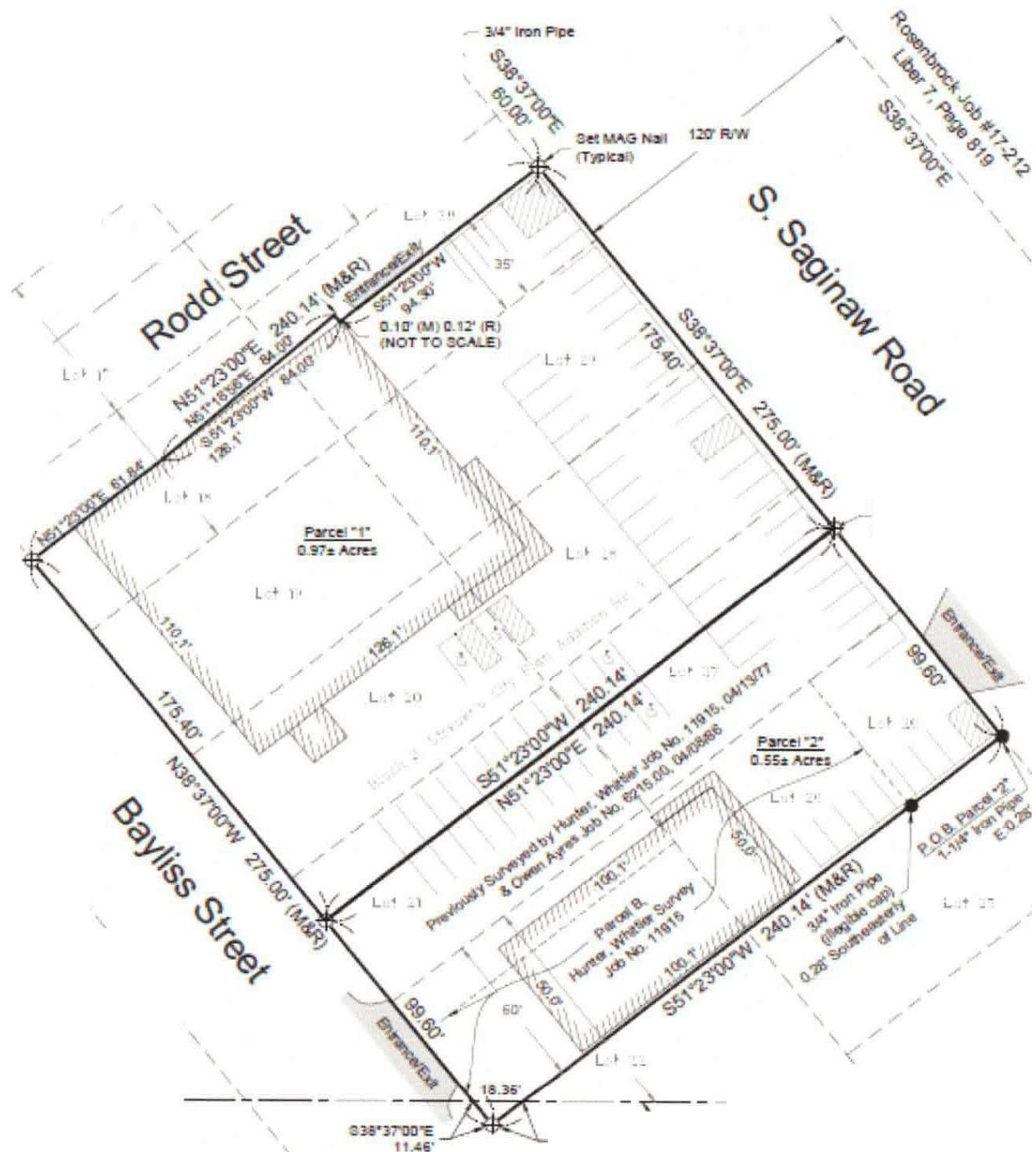
Lou Frango
Direct | +1 248 226 1678
lou.frango@colliers.com

Property Photos



Aerial

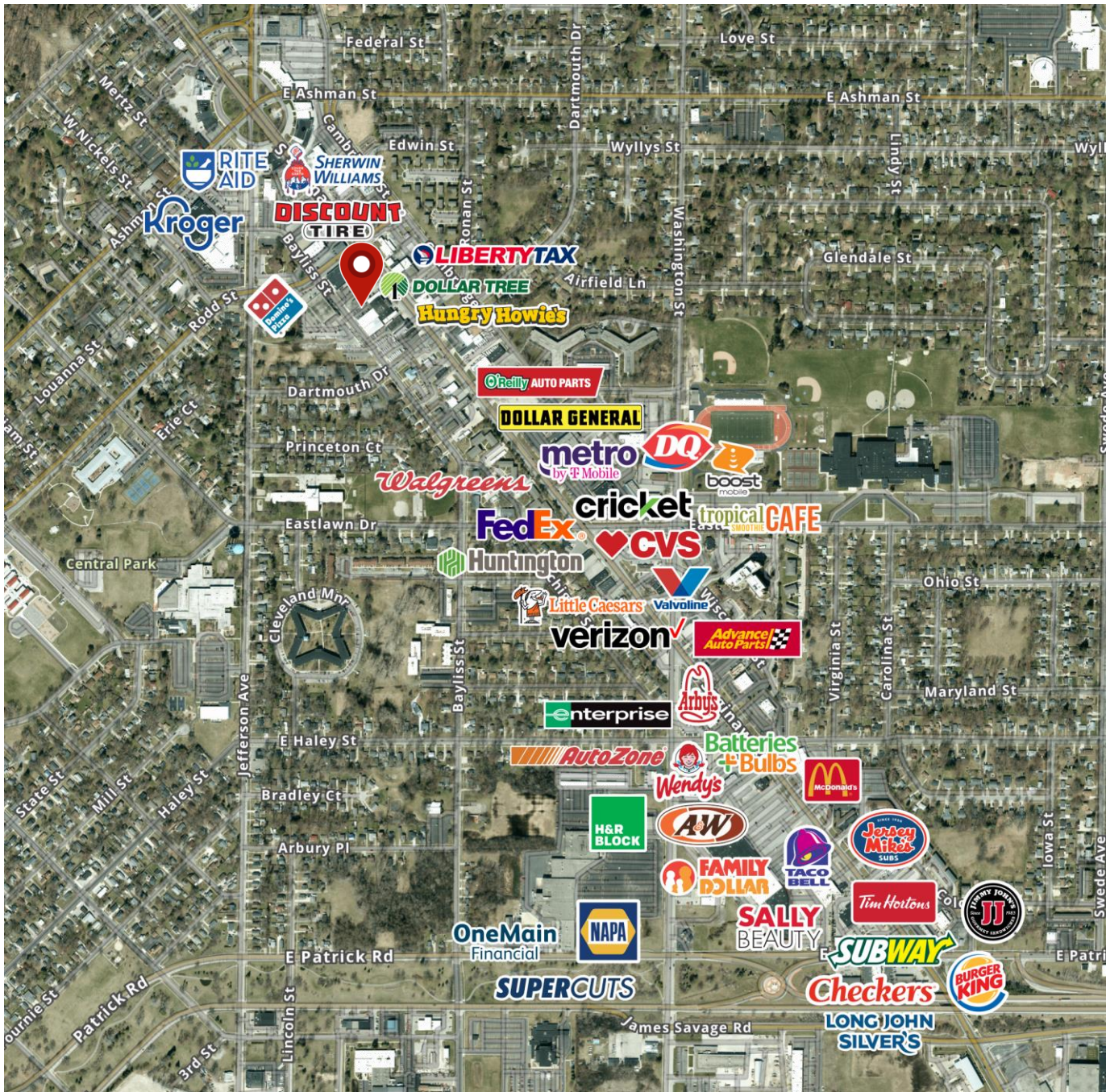




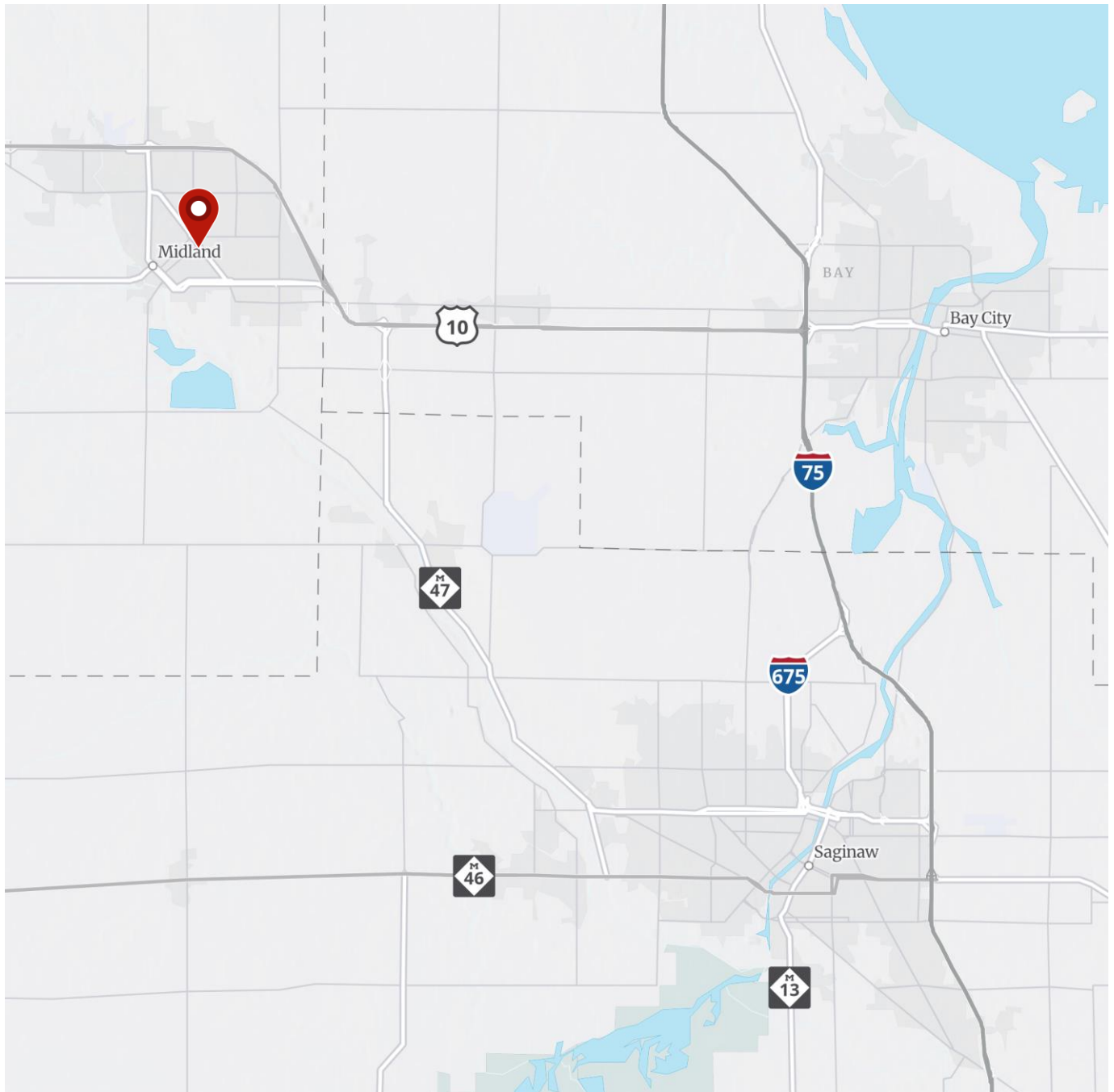
Retail Availability • 5,000 SF Former Advance Auto Parts
410 S Saginaw Road | Midland, MI



Merchant Map



Location Map



Demographics

Current Year Summary	1 Mile Radius	3 Mile Radius	5 Mile Radius
Total Population	9,849	36,098	51,122
Total Households	4,730	15,431	21,316
Total Family Households	2,362	9,397	13,279
Average Household Size	2.07	2.30	2.36
Median Age	42.6	42.4	42.1
Population Age 25+	7,240	25,913	36,341
2010 – 2021 Population: Annual Growth Rate	-0.26%	-0.03%	0.18%
Five Year Projected Trends: Annual Rate	1 Mile Radius	3 Mile Radius	5 Mile Radius
Population	-0.03%	-0.09%	-0.10%
Households	0.04%	0.03%	0.02%
Families	-0.09%	-0.09%	-0.08%
Median Household Income	3.16%	2.04%	2.17%
Current Year Population by Sex	1 Mile Radius	3 Mile Radius	5 Mile Radius
Male Population / % Male	4,622 / 46.9%	17,338 / 48.0%	24,865 / 48.6%
Female Population / % Female	5,227 / 53.1%	18,759 / 52.0%	26,257 / 51.4%
Income and Households Summary	1 Mile Radius	3 Mile Radius	5 Mile Radius
2020 Median Household Income	\$55,058	\$75,938	\$77,474
Average Household income	\$76,209	\$103,742	\$106,215
Per Capita Income	\$36,292	\$44,241	\$44,416
Summary Business Data	1 Mile Radius	3 Mile Radius	5 Mile Radius
Total Businesses	430	1,706	2,056
Total Daytime Population	9,902	51,105	62,806
Daytime Population: Workers	4,756	31,892	35,887
Daytime Population: Residents	5,146	19,213	26,919

Data Notes:

- Household population includes persons not residing in group quarters. Average Household Size is the household population divided by total households. Persons in families include the householder and persons related to the householder by birth, marriage, or adoption.
- Income represents the preceding year, expressed in current dollars. Household income includes wage and salary earnings, interest dividends, net rents, pensions, SSI and welfare payments, child support, and alimony.
- Per Capita Income represents the income received by all persons aged 15 years and over divided by the total population.



Lou Frango
 Direct | +1 248 226 1678
lou.frango@colliers.com