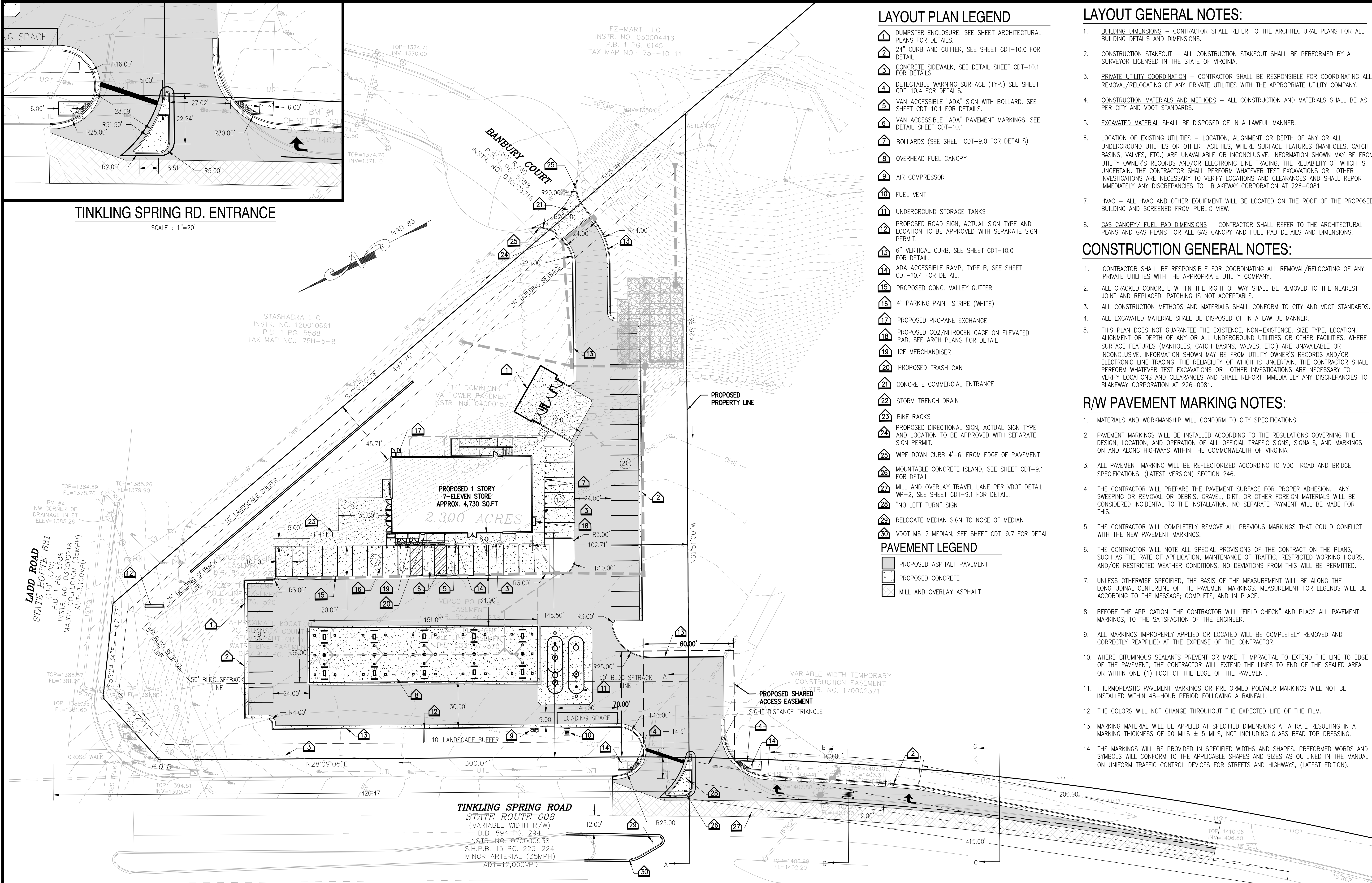
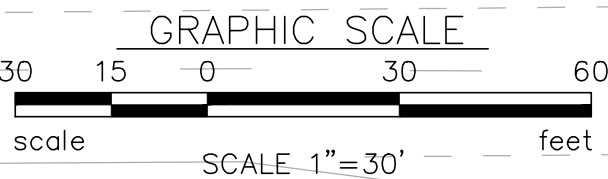


TINKLING SPRING RD. ENTRANCE

SCALE : 1"=20'



BEFORE YOU DIG, TO MISS UTILITIES  
CALL 'MISS UTILITY' OF VIRGINIA.  
TOLL FREE 811



LAYOUT PLAN LEGEND

- 1 DUMPSTER ENCLOSURE. SEE SHEET ARCHITECTURAL PLANS FOR DETAILS.
- 2 24" CURB AND GUTTER, SEE SHEET CDT-10.0 FOR DETAIL.
- 3 CONCRETE SIDEWALK, SEE DETAIL SHEET CDT-10.1 FOR DETAILS.
- 4 DETECTABLE WARNING SURFACE (TYP.) SEE SHEET CDT-10.4 FOR DETAILS.
- 5 VAN ACCESSIBLE "ADA" SIGN WITH BOLLARD. SEE SHEET CDT-10.1 FOR DETAILS.
- 6 VAN ACCESSIBLE "ADA" PAVEMENT MARKINGS. SEE DETAIL SHEET CDT-10.1.
- 7 BOLLARDS (SEE SHEET CDT-9.0 FOR DETAILS).
- 8 OVERHEAD FUEL CANOPY
- 9 AIR COMPRESSOR
- 10 FUEL VENT
- 11 UNDERGROUND STORAGE TANKS
- 12 PROPOSED ROAD SIGN, ACTUAL SIGN TYPE AND LOCATION TO BE APPROVED WITH SEPARATE SIGN PERMIT.
- 13 6" VERTICAL CURB, SEE SHEET CDT-10.0 FOR DETAIL.
- 14 ADA ACCESSIBLE RAMP, TYPE B, SEE SHEET CDT-10.4 FOR DETAIL.
- 15 PROPOSED CONC. VALLEY GUTTER
- 16 4" PARKING PAINT STRIPE (WHITE)
- 17 PROPOSED PROPANE EXCHANGE
- 18 PROPOSED CO2/NITROGEN CAGE ON ELEVATED PAD, SEE ARCH PLANS FOR DETAIL
- 19 ICE MERCHANDISER
- 20 PROPOSED TRASH CAN
- 21 CONCRETE COMMERCIAL ENTRANCE
- 22 STORM TRENCH DRAIN
- 23 BIKE RACKS
- 24 PROPOSED DIRECTIONAL SIGN, ACTUAL SIGN TYPE AND LOCATION TO BE APPROVED WITH SEPARATE SIGN PERMIT.
- 25 WIPE DOWN CURB 4'-6" FROM EDGE OF PAVEMENT
- 26 MOUNTABLE CONCRETE ISLAND, SEE SHEET CDT-9.1 FOR DETAIL
- 27 MILL AND OVERLAY TRAVEL LANE PER VDOT DETAIL WP-2, SEE SHEET CDT-9.1 FOR DETAIL.
- 28 "NO LEFT TURN" SIGN
- 29 RELOCATE MEDIAN SIGN TO NOSE OF MEDIAN
- 30 VDOT MS-2 MEDIAN, SEE SHEET CDT-9.7 FOR DETAIL

PAVEMENT LEGEND

- PROPOSED ASPHALT PAVEMENT
- PROPOSED CONCRETE
- MILL AND OVERLAY ASPHALT

LAYOUT GENERAL NOTES:

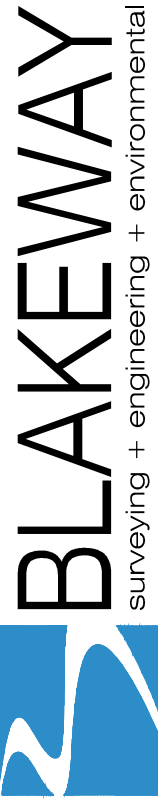
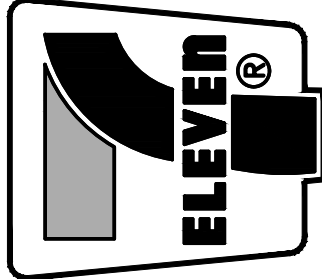
1. BUILDING DIMENSIONS - CONTRACTOR SHALL REFER TO THE ARCHITECTURAL PLANS FOR ALL BUILDING DETAILS AND DIMENSIONS.
2. CONSTRUCTION STAKEOUT - ALL CONSTRUCTION STAKEOUT SHALL BE PERFORMED BY A SURVEYOR LICENSED IN THE STATE OF VIRGINIA.
3. PRIVATE UTILITY COORDINATION - CONTRACTOR SHALL BE RESPONSIBLE FOR COORDINATING ALL REMOVAL/RELOCATING OF ANY PRIVATE UTILITIES WITH THE APPROPRIATE UTILITY COMPANY.
4. CONSTRUCTION MATERIALS AND METHODS - ALL CONSTRUCTION AND MATERIALS SHALL BE AS PER CITY AND VDOT STANDARDS.
5. EXCAVATED MATERIAL SHALL BE DISPOSED OF IN A LAWFUL MANNER.
6. LOCATION OF EXISTING UTILITIES - LOCATION, ALIGNMENT OR DEPTH OF ANY OR ALL UNDERGROUND UTILITIES OR OTHER FACILITIES, WHERE SURFACE FEATURES (MANHOLES, CATCH BASINS, VALVES, ETC.) ARE UNAVAILABLE OR INCONCLUSIVE, INFORMATION SHOWN MAY BE FROM UTILITY OWNER'S RECORDS AND/OR ELECTRONIC LINE TRACING, THE RELIABILITY OF WHICH IS UNCERTAIN. THE CONTRACTOR SHALL PERFORM WHATEVER TEST EXCAVATIONS OR OTHER INVESTIGATIONS ARE NECESSARY TO VERIFY LOCATIONS AND CLEARANCES AND SHALL REPORT IMMEDIATELY ANY DISCREPANCIES TO BLAKEWAY CORPORATION AT 226-0081.
7. HVAC - ALL HVAC AND OTHER EQUIPMENT WILL BE LOCATED ON THE ROOF OF THE PROPOSED BUILDING AND SCREENED FROM PUBLIC VIEW.
8. GAS CANOPY/ FUEL PAD DIMENSIONS - CONTRACTOR SHALL REFER TO THE ARCHITECTURAL PLANS AND GAS PLANS FOR ALL GAS CANOPY AND FUEL PAD DETAILS AND DIMENSIONS.

CONSTRUCTION GENERAL NOTES:

1. CONTRACTOR SHALL BE RESPONSIBLE FOR COORDINATING ALL REMOVAL/RELOCATING OF ANY PRIVATE UTILITIES WITH THE APPROPRIATE UTILITY COMPANY.
2. ALL CRACKED CONCRETE WITHIN THE RIGHT OF WAY SHALL BE REMOVED TO THE NEAREST JOINT AND REPLACED. PATCHING IS NOT ACCEPTABLE.
3. ALL CONSTRUCTION METHODS AND MATERIALS SHALL CONFORM TO CITY AND VDOT STANDARDS.
4. ALL EXCAVATED MATERIAL SHALL BE DISPOSED OF IN A LAWFUL MANNER.
5. THIS PLAN DOES NOT GUARANTEE THE EXISTENCE, NON-EXISTENCE, SIZE TYPE, LOCATION, ALIGNMENT OR DEPTH OF ANY OR ALL UNDERGROUND UTILITIES OR OTHER FACILITIES, WHERE SURFACE FEATURES (MANHOLES, CATCH BASINS, VALVES, ETC.) ARE UNAVAILABLE OR INCONCLUSIVE, INFORMATION SHOWN MAY BE FROM UTILITY OWNER'S RECORDS AND/OR ELECTRONIC LINE TRACING, THE RELIABILITY OF WHICH IS UNCERTAIN. THE CONTRACTOR SHALL PERFORM WHATEVER TEST EXCAVATIONS OR OTHER INVESTIGATIONS ARE NECESSARY TO VERIFY LOCATIONS AND CLEARANCES AND SHALL REPORT IMMEDIATELY ANY DISCREPANCIES TO BLAKEWAY CORPORATION AT 226-0081.

R/W PAVEMENT MARKING NOTES:

1. MATERIALS AND WORKMANSHIP WILL CONFORM TO CITY SPECIFICATIONS.
2. PAVEMENT MARKINGS WILL BE INSTALLED ACCORDING TO THE REGULATIONS GOVERNING THE DESIGN, LOCATION, AND OPERATION OF ALL OFFICIAL TRAFFIC SIGNS, SIGNALS, AND MARKINGS ON AND ALONG HIGHWAYS WITHIN THE COMMONWEALTH OF VIRGINIA.
3. ALL PAVEMENT MARKING WILL BE REFLECTORIZED ACCORDING TO VDOT ROAD AND BRIDGE SPECIFICATIONS, (LATEST VERSION) SECTION 246.
4. THE CONTRACTOR WILL PREPARE THE PAVEMENT SURFACE FOR PROPER ADHESION. ANY SWEEPING OR REMOVAL OF DEBRIS, GRAVEL, DIRT, OR OTHER FOREIGN MATERIALS WILL BE CONSIDERED INCIDENTAL TO THE INSTALLATION. NO SEPARATE PAYMENT WILL BE MADE FOR THIS.
5. THE CONTRACTOR WILL COMPLETELY REMOVE ALL PREVIOUS MARKINGS THAT COULD CONFLICT WITH THE NEW PAVEMENT MARKINGS.
6. THE CONTRACTOR WILL NOTE ALL SPECIAL PROVISIONS OF THE CONTRACT ON THE PLANS, SUCH AS THE RATE OF APPLICATION, MAINTENANCE OF TRAFFIC, RESTRICTED WORKING HOURS, AND/OR RESTRICTED WEATHER CONDITIONS. NO DEVIATIONS FROM THIS WILL BE PERMITTED.
7. UNLESS OTHERWISE SPECIFIED, THE BASIS OF THE MEASUREMENT WILL BE ALONG THE LONGITUDINAL CENTERLINE OF THE PAVEMENT MARKINGS. MEASUREMENT FOR LEGENDS WILL BE ACCORDING TO THE MESSAGE, COMPLETE, AND IN PLACE.
8. BEFORE THE APPLICATION, THE CONTRACTOR WILL "FIELD CHECK" AND PLACE ALL PAVEMENT MARKINGS, TO THE SATISFACTION OF THE ENGINEER.
9. ALL MARKINGS IMPROPERLY APPLIED OR LOCATED WILL BE COMPLETELY REMOVED AND CORRECTLY REAPPLIED AT THE EXPENSE OF THE CONTRACTOR.
10. WHERE BITUMINOUS SEALANTS PREVENT OR MAKE IT IMPRACTICAL TO EXTEND THE LINE TO EDGE OF THE PAVEMENT, THE CONTRACTOR WILL EXTEND THE LINES TO END OF THE SEALED AREA OR WITHIN ONE (1) FOOT OF THE EDGE OF THE PAVEMENT.
11. THERMOPLASTIC PAVEMENT MARKINGS OR PREFORMED POLYMER MARKINGS WILL NOT BE INSTALLED WITHIN 48-HOUR PERIOD FOLLOWING A RAINFALL.
12. THE COLORS WILL NOT CHANGE THROUGHOUT THE EXPECTED LIFE OF THE FILM.
13. MARKING MATERIAL WILL BE APPLIED AT SPECIFIED DIMENSIONS AT A RATE RESULTING IN A MARKING THICKNESS OF 90 MILS ± 5 MILS, NOT INCLUDING GLASS BEAD TOP DRESSING.
14. THE MARKINGS WILL BE PROVIDED IN SPECIFIED WIDTHS AND SHAPES, PREFORMED WORDS AND SYMBOLS WILL CONFORM TO THE APPLICABLE SHAPES AND SIZES AS OUTLINED IN THE MANUAL ON UNIFORM TRAFFIC CONTROL DEVICES FOR STREETS AND HIGHWAYS, (LATEST EDITION).



BLAKEWAY  
surveying + engineering + environmental  
630 N WITCHDUCK RD. - VA BEACH, VIRGINIA 23464  
P757 226 0081 - F757 226 8765  
www.blakewaycorp.com

DATE ISSUED	REVISION	PER COUNTY COMMENTS	DESCRIPTION
01/06/2021		REVISED PER COUNTY COMMENTS	
01/27/2021		REVISED PER COUNTY COMMENTS	

DATE ISSUED	REVISION	PER COUNTY COMMENTS	DESCRIPTION
09/25/20		REVISED PER COUNTY COMMENTS	
01/06/2021		REVISED PER COUNTY COMMENTS	

TINKLING SPRING RD. 7-ELEVEN  
LAYOUT PLAN  
SHEET NO. 41565  
SITE ADDRESS  
766 TINKLING SPRING RD  
FISHERVILLE, VA

CL-4.0