

OFFERING MEMORANDUM



ABSOLUTE NNN

Long-Term Lease With
Nearly 12 Years Remaining

1630 W STATE ROUTE 260
CAMP VERDE, AZ

\$1,613,384 | 5.75% CAP



TAKEN OCT 2021



EXCLUSIVELY LISTED BY

MARK MCLOONE

Managing Partner

AZ Lic: SA673250000

602.790.1526

mark@retail1031.com

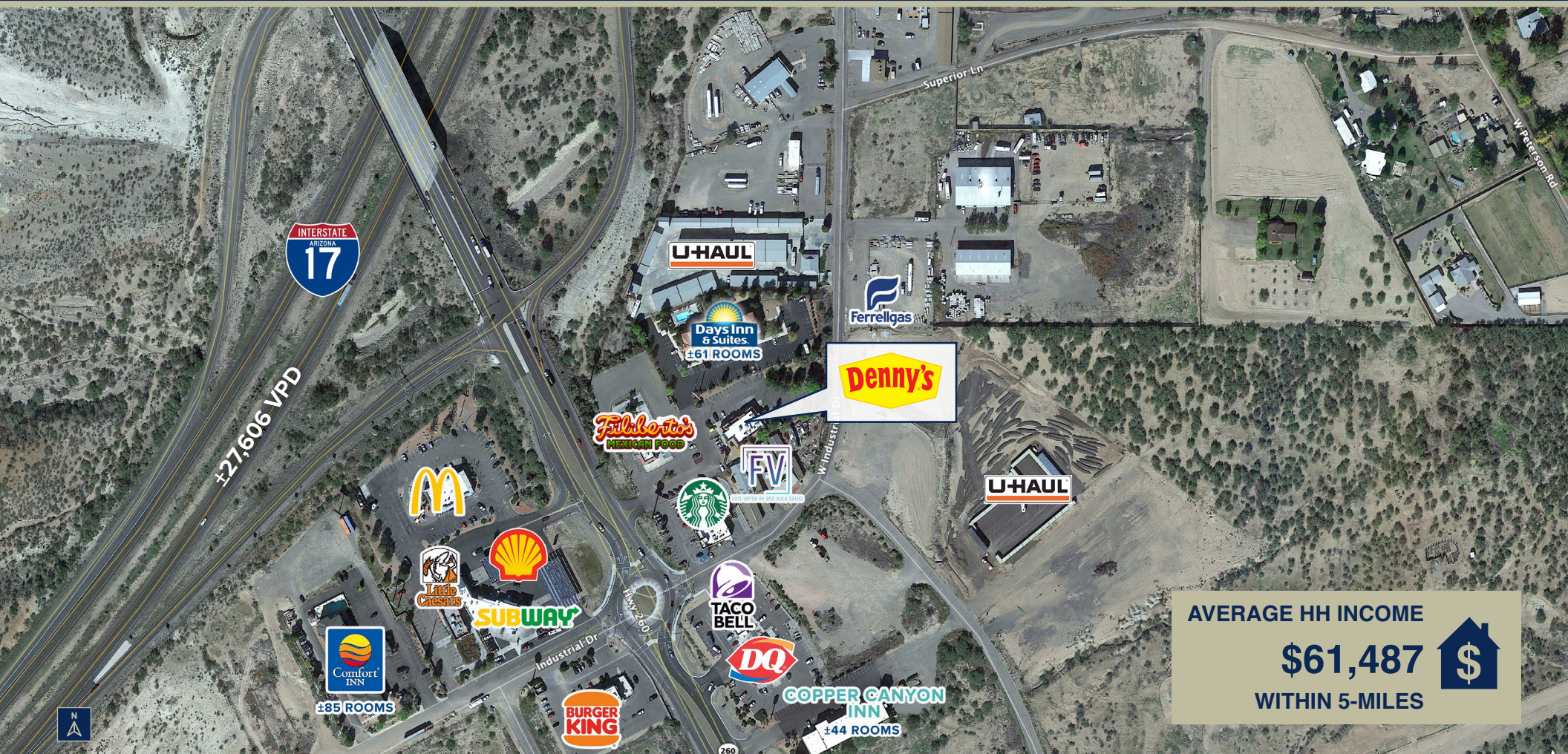
STEVEN DAVIS

Managing Partner

AZ Lic: BR101032000

602.625.8338

steven@retail1031.com

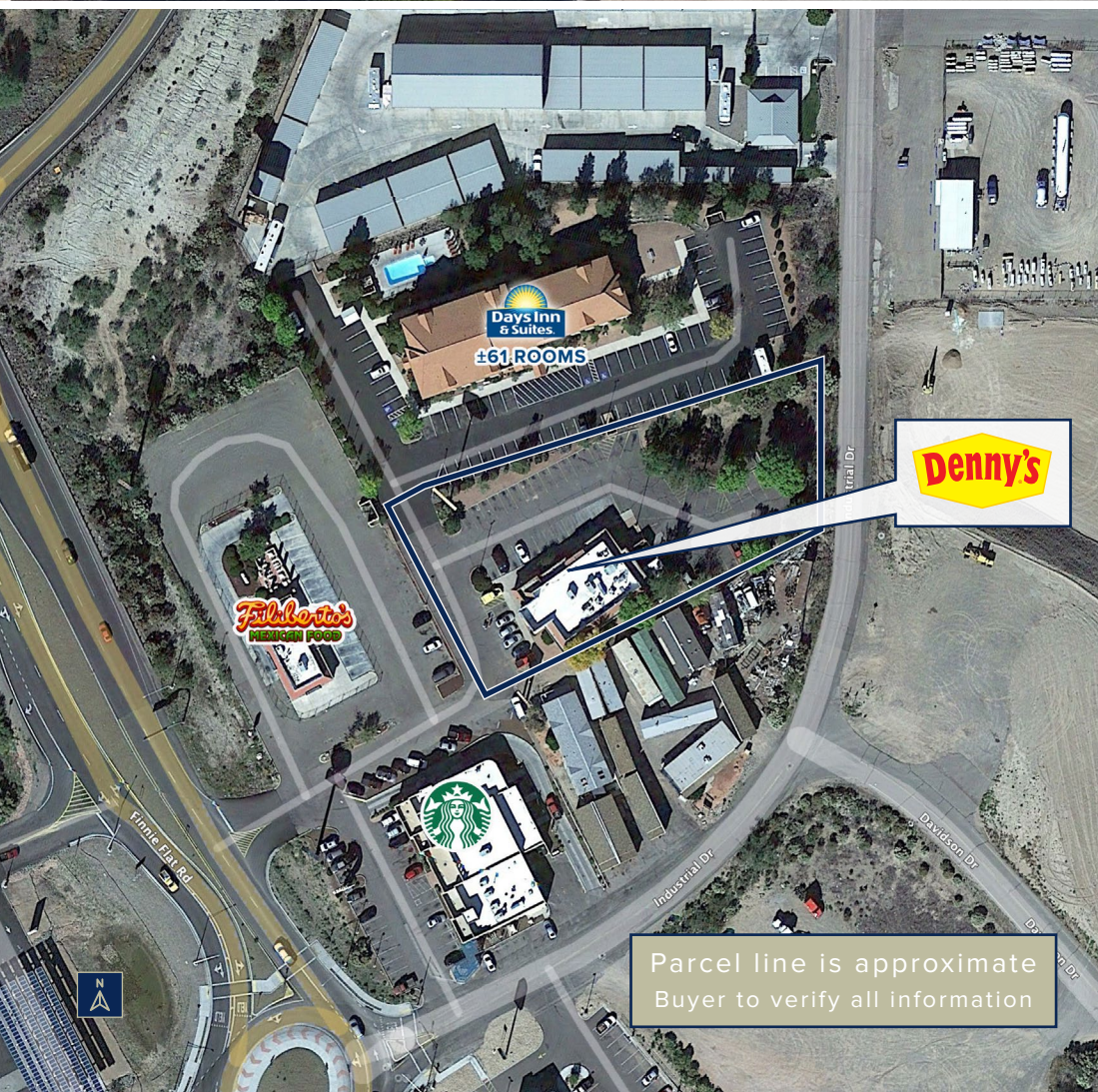


AVERAGE HH INCOME

\$61,487

WITHIN 5-MILES





DENNY'S | CAMP VERDE, AZ

EXECUTIVE SUMMARY

\$1,613,384

PRICE

5.75%

CAP

\$92,770

NOI

LOCATION

1630 W State Route 260
Camp Verde, AZ 86322

LEASE TYPE

Absolute NNN

LEASE
EXPIRATION

August 8, 2033

LESSEE

Sunrise Restaurants
(WKS Restaurant Group)

GUARANTOR

Sunrise Restaurants
(WKS Restaurant Group)

OPTIONS

(2) 5 Year Options

INCREASES

10% Every 5 Years

LAND SIZE

±1.17 Acres

BUILDING SIZE

±5,169 Square Feet

YEAR BUILT

1999

ROFR

None

Retail Investment Group

480.429.4580 | retail1031.com



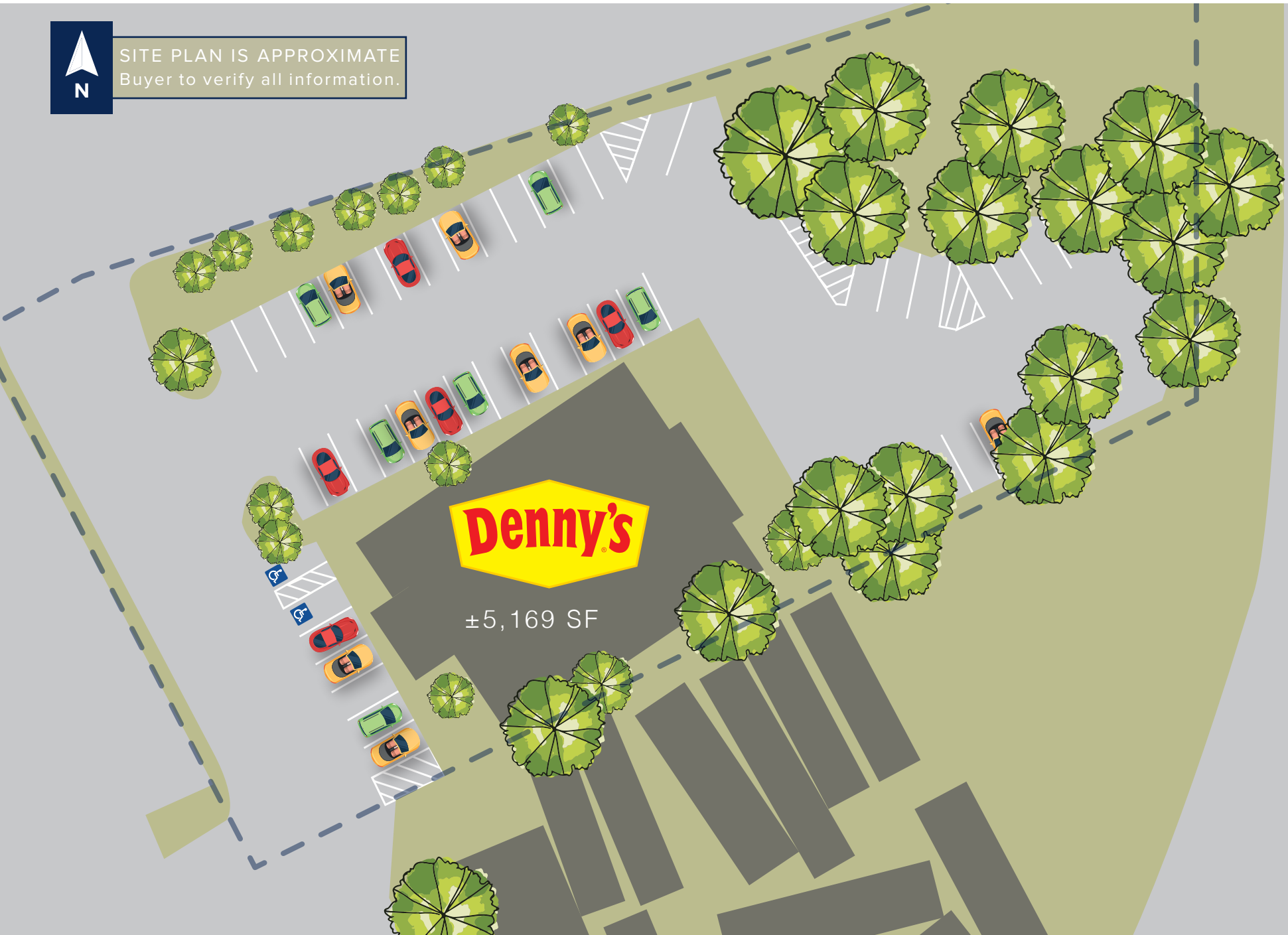
DENNY'S | CAMP VERDE, AZ

PROPERTY HIGHLIGHTS

- Largest Denny's franchisee in the country
- Large operator - WKS Restaurant Group is the parent company of the signing entity, Sunrise Restaurants (±122 Denny's locations)
- Absolute NNN lease - ZERO landlord responsibilities
- Long-term lease with nearly 12 years remaining
- Located right off of I-17 with ±27,606 vehicles per day
- Excellent freeway access and visibility from I-17 freeway
- Nearby tenants include Days Inn (±61 rooms), Copper Canyon Inn (±44 rooms), Comfort Inn (±85 rooms), U-Haul, Starbucks, Taco Bell, McDonald's and Burger King
- Located about 90 minutes north of Metro Phoenix
- 10% rent increase August 8, 2023



SITE PLAN IS APPROXIMATE
Buyer to verify all information.



TENANT PROFILE

Denny's



+1,649
Locations



±50 STATES
in the U.S.



1953
Founded

Nasdaq

"DENN"
Nasdaq

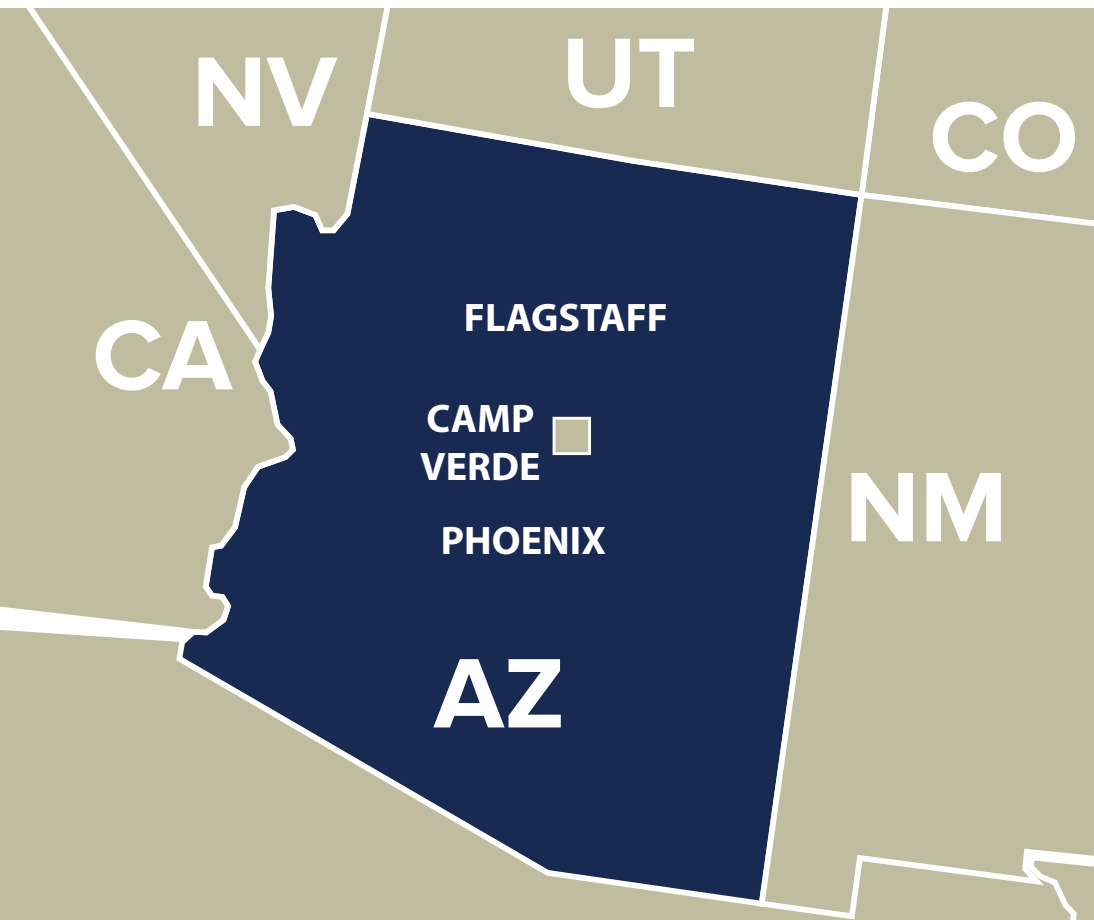
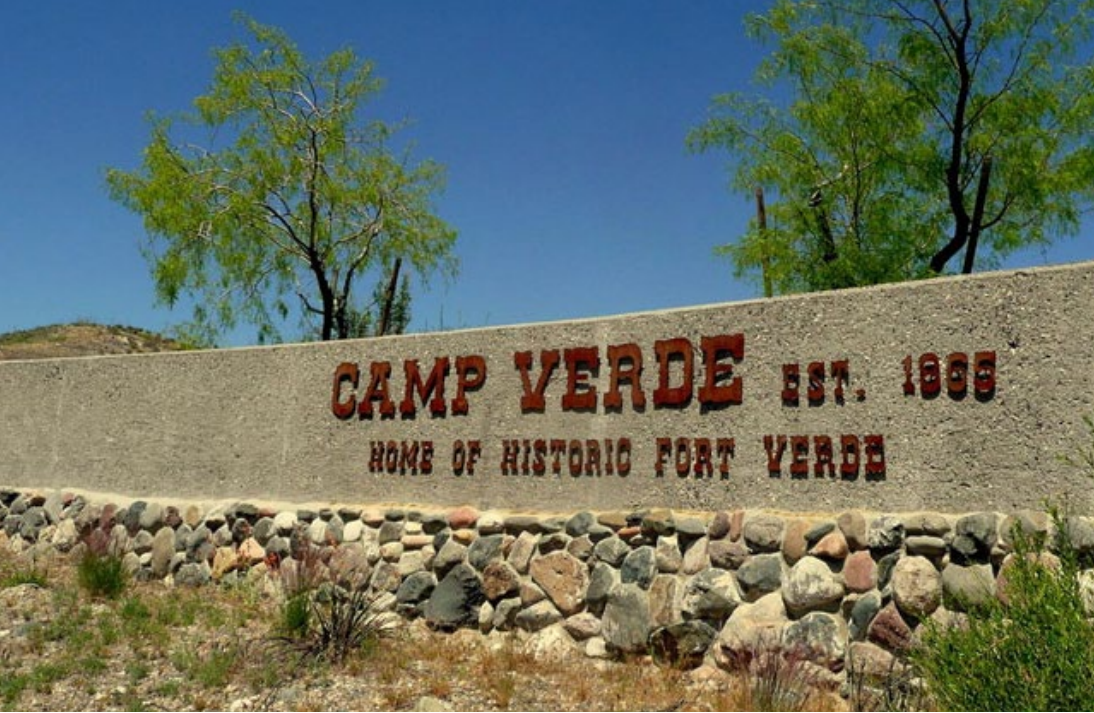
Denny's was founded by Harold Butler and Richard Jezak, who opened Danny's Donuts in Lakewood, California in 1953. Originally opened as a coffee shop under the name Danny's Donuts, Denny's is now known for always being open and serving breakfast, lunch and dinner around the clock. Denny's started franchising in 1963, and most Denny's restaurants are now franchisee-owned.

Denny's is America's largest full service family-style restaurant chain (market share and number of units). As of March 31, 2021, Denny's had 1,649 franchised, licensed, and company restaurants around the world including 148 restaurants in Canada, Puerto Rico, Mexico, the Philippines, New Zealand, Honduras, the United Arab Emirates, Costa Rica, Guam, Guatemala, El Salvador, Indonesia, and the United Kingdom. Denny's restaurants are open 24 hours a day, 7 days a week. This "always open" operating platform is a distinct competitive advantage. Denny's provides high quality menu offerings, generous portions at reasonable prices with friendly and efficient service in a pleasant atmosphere.





±90 MINUTES
FROM PHOENIX



DENNY'S | CAMP VERDE, AZ

AREA OVERVIEW

Camp Verde is a town in Yavapai County, Arizona. Camp Verde had an estimated 11,187 residents in 2019.

Camp Verde's central location, along with its temperate year-around climate, abundant outdoor recreational opportunities, and bucolic setting on the banks of the Verde River, make it one of Arizona's premier tourist destinations.

Tourist attractions include the nearby Montezuma Castle National Monument located in Verde Valley. In the town is Fort Verde State Historic Park, and Out of Africa Wildlife Park. The Cliff Castle Casino, operated by the Yavapai-Apache Nation Indian tribe, is an important gambling destination for north and central Arizona. Fort Verde State Historic Park is located in Camp Verde's Historic Downtown approximately 1-mile from all three Camp Verde exits.

DEMOGRAPHICS

DENNY'S | CAMP VERDE, AZ

POPULATION



	3 Miles	5 Miles	10 Miles
2021 Est	7,129	9,064	20,179
2026 Proj	7,497	9,518	20,999



FOOD AWAY FROM HOME SPENDING OF
±\$10,076,847
WITHIN 5-MILES

2021 HOUSEHOLD INCOME



	3 Miles	5 Miles	10 Miles
Avg Household Income	\$59,236	\$61,487	\$60,038
Med Household Income	\$42,231	\$44,368	\$46,341



2021 POPULATION OF
±9,064 RESIDENTS
WITHIN 5-MILES

HOUSEHOLDS



	3 Miles	5 Miles	10 Miles
2021 Est	2,790	3,417	7,771
2026 Proj	2,936	3,589	8,080



I-17 @ SR-260 ±27,606 VPD
Finnie Flat Road @ I- 17 NW ±10,995 VPD

ADOT 2020 / CoStar 2020

EXCLUSIVELY LISTED BY

MARK MCLOONE

Managing Partner

AZ Lic: SA673250000

602.790.1526

mark@retail1031.com

STEVEN DAVIS

Managing Partner

AZ Lic: BR101032000

602.625.8338

steven@retail1031.com



480.429.4580 | retail1031.com

CONFIDENTIALITY DISCLAIMER

The information contained in the following offering memorandum is proprietary and strictly confidential. It is intended to be reviewed only by the party receiving it from Retail Investment Group and it should not be made available to any other person or entity without the written consent of Retail Investment Group. By taking possession of and reviewing the information contained herein the recipient agrees to hold and treat all such information in the strictest confidence. The recipient further agrees that recipient will not photocopy or duplicate any part of the offering memorandum. If you have no interest in the subject property, please promptly return this offering memorandum to Retail Investment Group. This offering memorandum has been prepared to provide summary, unverified financial and physical information to prospective purchasers, and to establish only a preliminary level of interest in the subject property. The information contained herein is not a substitute for a thorough due diligence investigation. Retail Investment Group has not made any investigation, and makes no warranty or representation with respect to the income or expenses for the subject property, the future projected financial performance of the property, the size and square footage of the property and improvements, the presence of absence of contaminating substances, PCBs or asbestos, the compliance with local, state and federal regulations, the physical condition of the improvements thereon, or financial condition or business prospects of any tenant, or any tenant's plans or intentions to continue its occupancy of the subject property. Additional information and an opportunity to inspect the Property will be made available upon written request to interested and qualified prospective investors. The information contained in this offering memorandum has been obtained from sources we believe reliable; however, Retail Investment Group has not verified, and will not verify, any of the information contained herein, nor has Retail Investment Group conducted any investigation regarding these matters and makes no warranty or representation whatsoever regarding the accuracy or completeness of the information provided. All potential buyers must take appropriate measures to verify all of the information set forth herein. Prospective buyers shall be responsible for their costs and expenses of investigating the subject property. The information contained herein has been obtained from the owner of the property or from other sources we deem reliable. We have no reason to doubt its accuracy, but we do not guarantee it. If you have no interest in the Property, please return this Offering Memorandum to Retail Investment Group, LLC.

