

# *Available*

1500 East Sheridan Street  
Ely, MN 55731



Jeff J. Houge . Dana M. Dose

Phone: (612) 490-5551 . (612) 978-4576

[jeff@wakota.com](mailto:jeff@wakota.com) . [dana@wakota.com](mailto:dana@wakota.com)



**WAKOTA** commercial advisors

# *TABLE OF CONTENTS*

SALIENT FACTS

..

MAP / AERIAL

..

PHOTOS

..

FLOOR PLANS

## SALIENT FACTS

<b>Location:</b>	1500 East Sheridan Street Ely, MN 55731
<b>Year Built:</b>	2008
<b>Building Size:</b>	32,100 Sq. Ft.
<b>Land Acreage:</b>	3.01
<b>Price:</b>	\$1,650,000
<b>Zoning:</b>	C-1 Commercial 1 District
<b>Parking:</b>	97 spaces
<b>Drive Thru:</b>	Yes
<b>Loading Dock:</b>	2 doors

This 32,100 Square foot building is located on East Sheridan Road (Hwy 1), which is the primary east-west roadway and the retail traffic thoroughfare connecting to all the highways in Ely. The property has ingress and egress access off of East Sheridan Street (Highway 1) allowing easy access in and out of the property. There is an abundance of parking with close to 100 parking spaces.

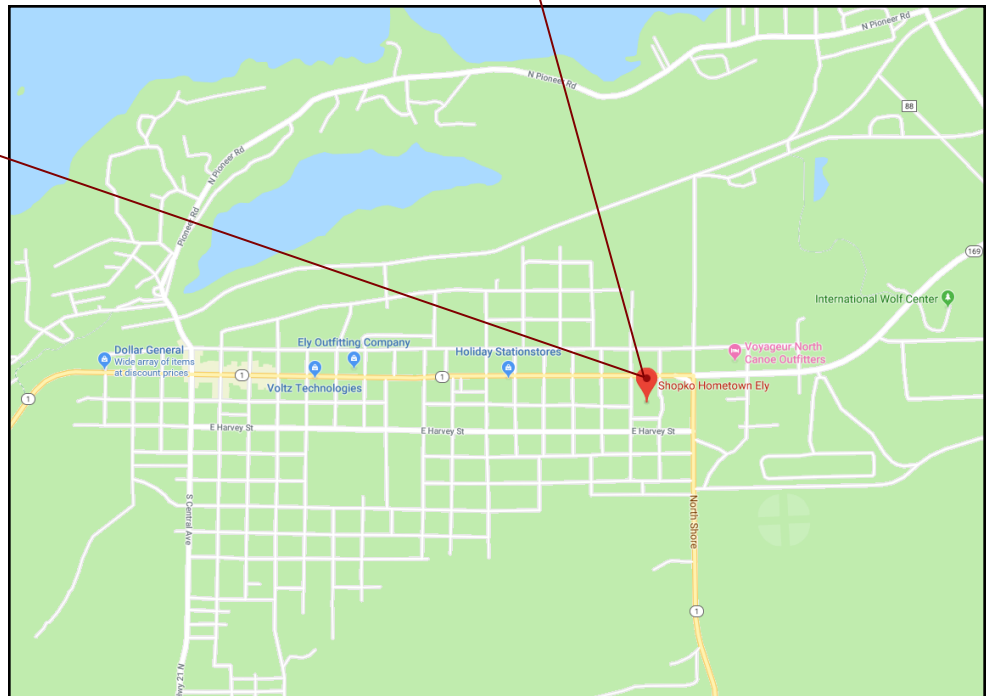
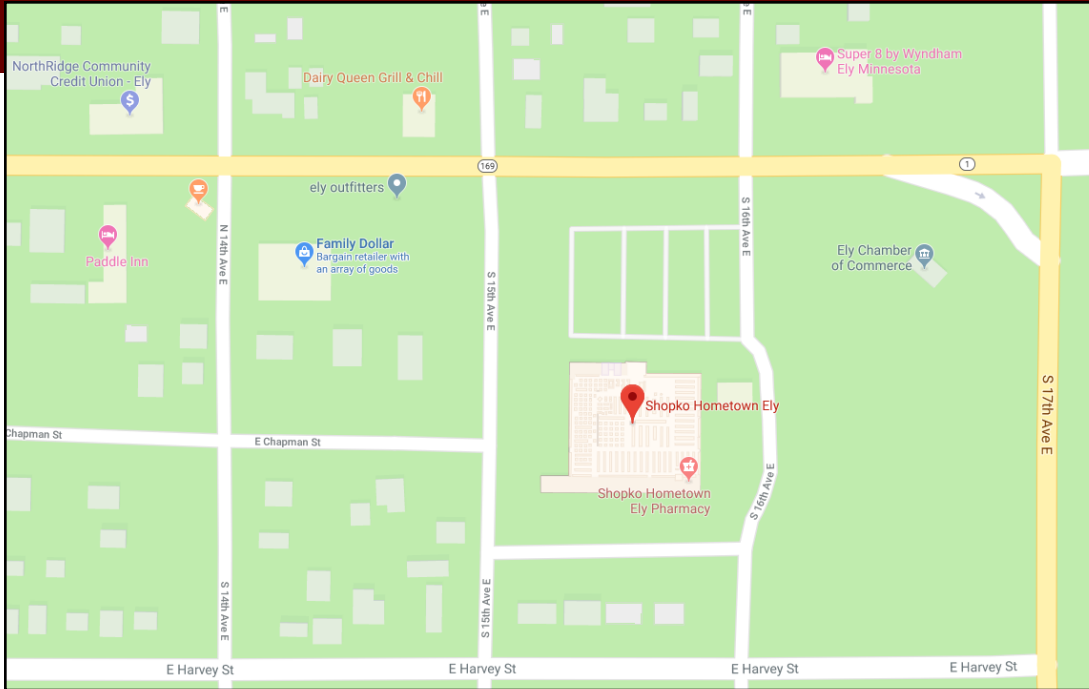


**WAKOTA** commercial advisors

# Former Shopko

## 1500 East Sheridan Street

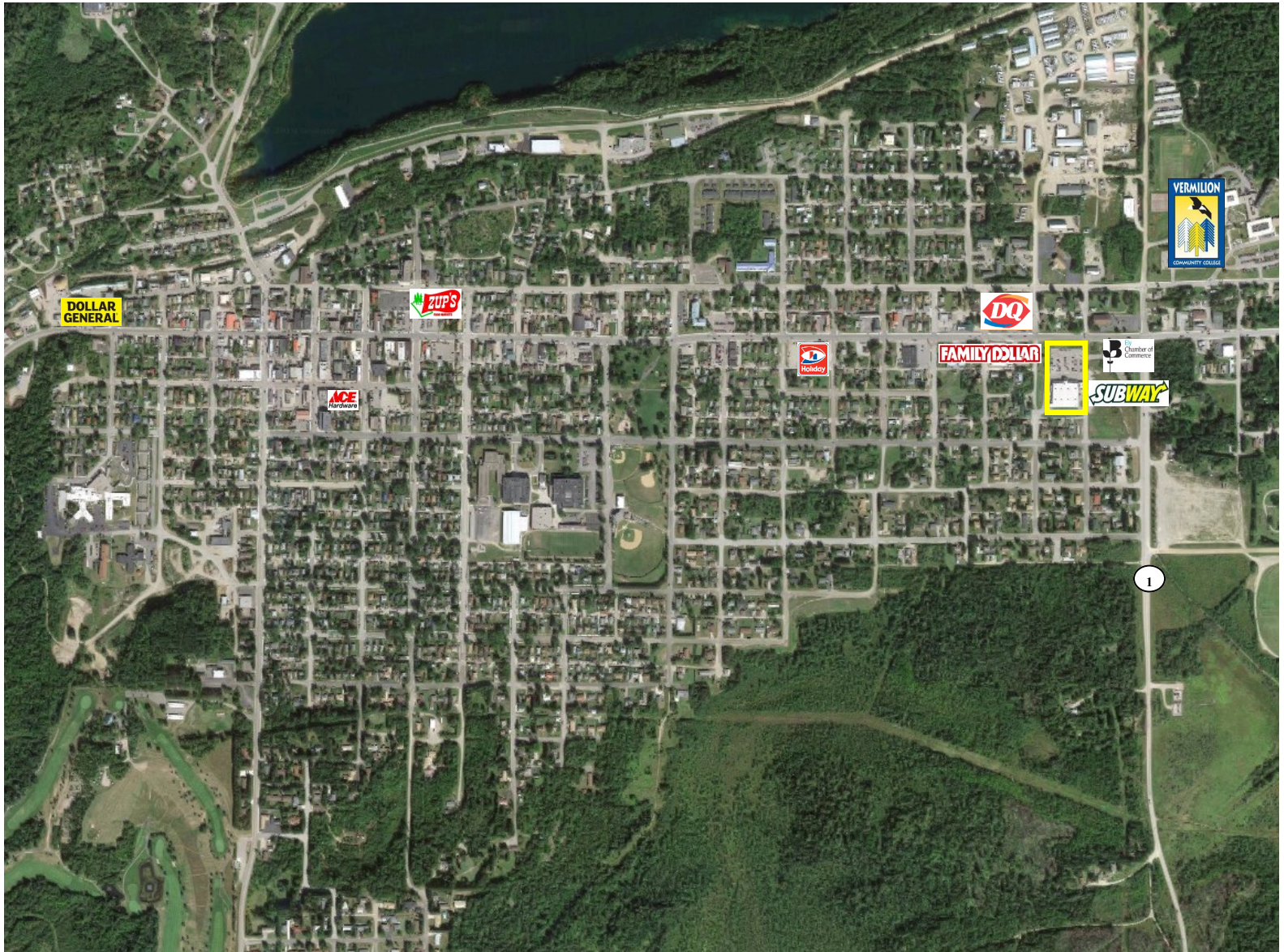
### Ely, MN 55731



**WAKOTA** commercial advisors



Former Shopko  
1500 East Sheridan Street  
Ely, MN 55731



WAKOTA commercial advisors



Former Shopko  
1500 East Sheridan Street  
Ely, MN 55731



**WAKOTA** commercial advisors

**Former Shopko**  
**1500 East Sheridan Street**  
**Ely, MN 55731**



**WAKOTA** commercial advisors

**Former Shopko**  
**1500 East Sheridan Street**  
**Ely, MN 55731**

