

SPACE FOR SUBLEASE AVAILABLE IN KENT

PREMIER RETAIL SPACE



Mike Horner

+1 206 607 1751

mike.horner@am.jll.com

Ryan Jones

+1 206 607 1741

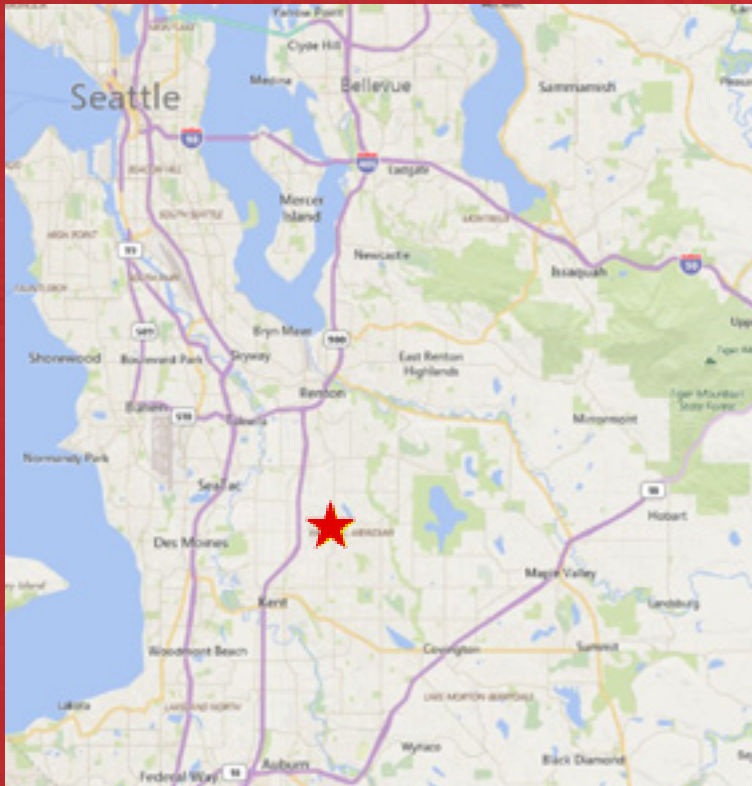
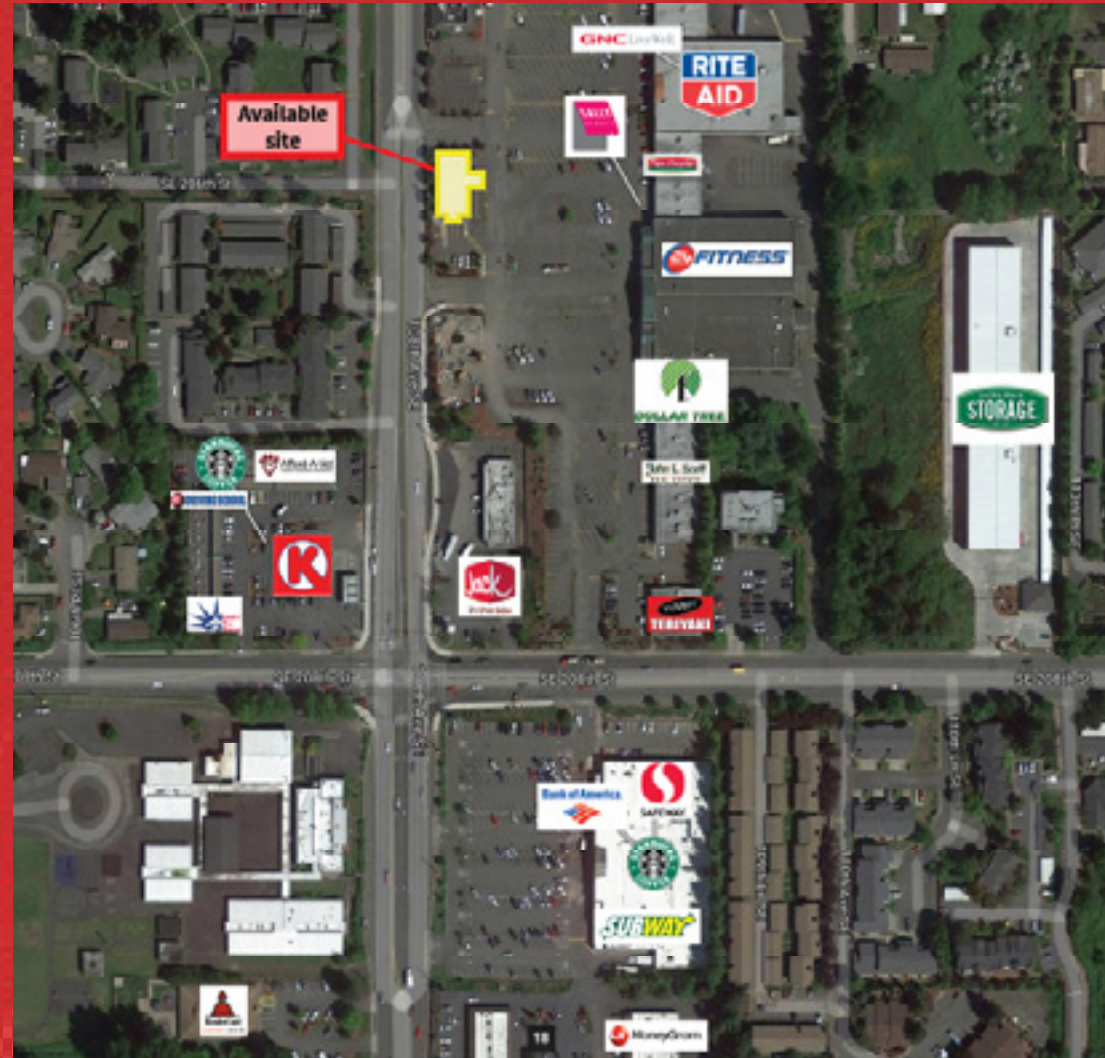
ryan.jones@am.jll.com

3,848 SF AVAILABLE

20540 108TH AVE SE | KENT, WA 98031

RETAIL OPPORTUNITY

OFFERING APPROXIMATELY **3,848 SF** OF PRIME RETAIL SPACE



Several national and regional
credit tenants within the surrounding area

PRIME LOCATION ON KENT EAST HILL

- + 3,848 SF available
- + \$26.00/psf
- + Tenants include: Rite Aid, Dollar Tree, Starbucks, 24 Hour Fitness and King County Library coming soon!
- + Dedicated surface parking
- + Easy access to Hwy 167
- + Visible from 108th Ave SE with excellent signage
- + Multiple lane drive thru



TRANSIT SCORE

32

2017 NEIGHBORHOOD STATISTICS

RADIUS	1 MILE	3 MILE	5 MILE5
Population	15,707	100,027	247,832
Total Employees	7,701	50,771	123,162
Average Household Income	\$95,109	\$91,863	\$89,023

2017 TRAFFIC COUNTS

COLLECTION STREET	TRAFFIC COUNT	DISTANCE
SE 208th St & 108th Ave SE W	25,144	0.13 mi
SE 208th St & 108th Ave SE E	35,633	0.14 mi
108th Ave SE & SE 204th St S	27,000	0.20 mi

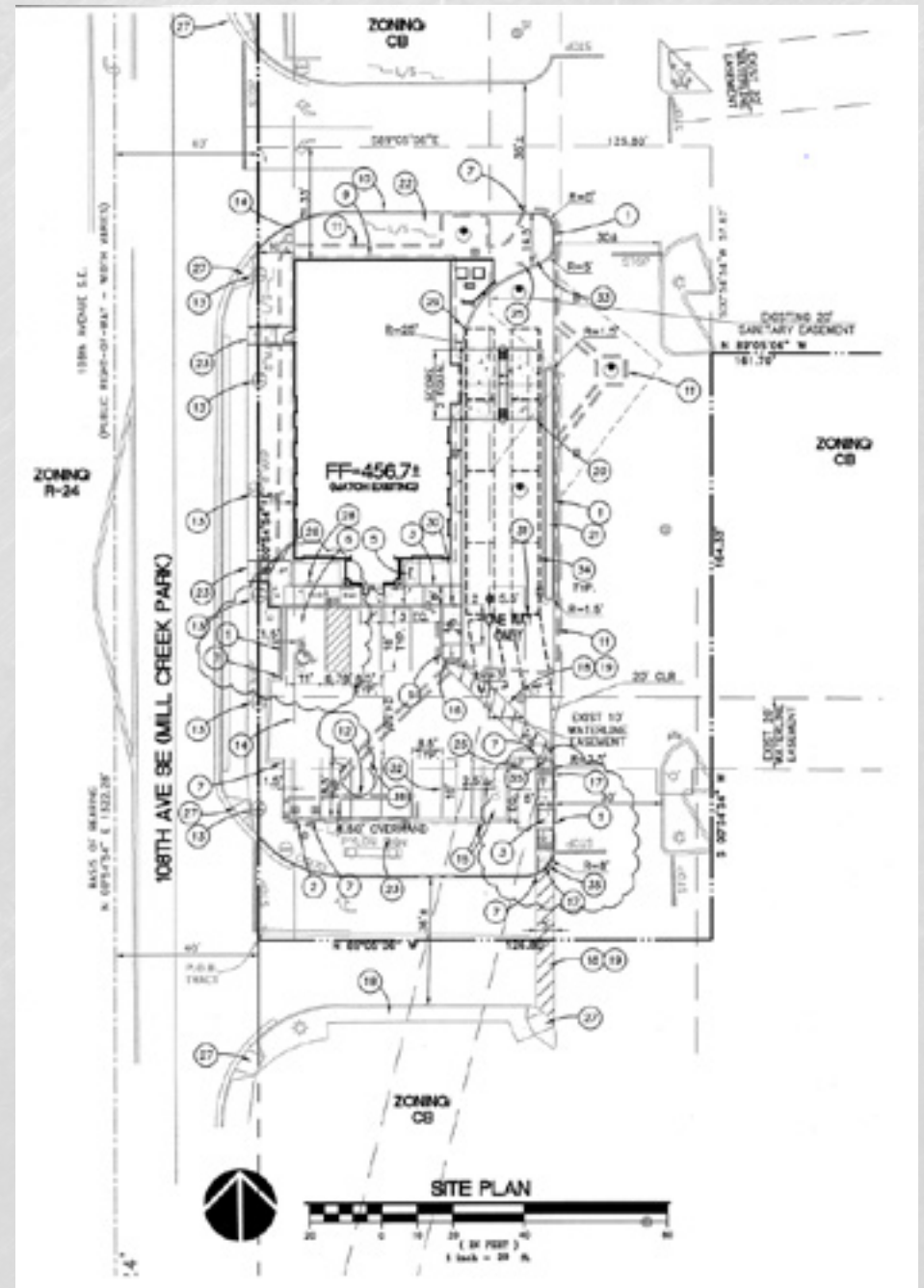
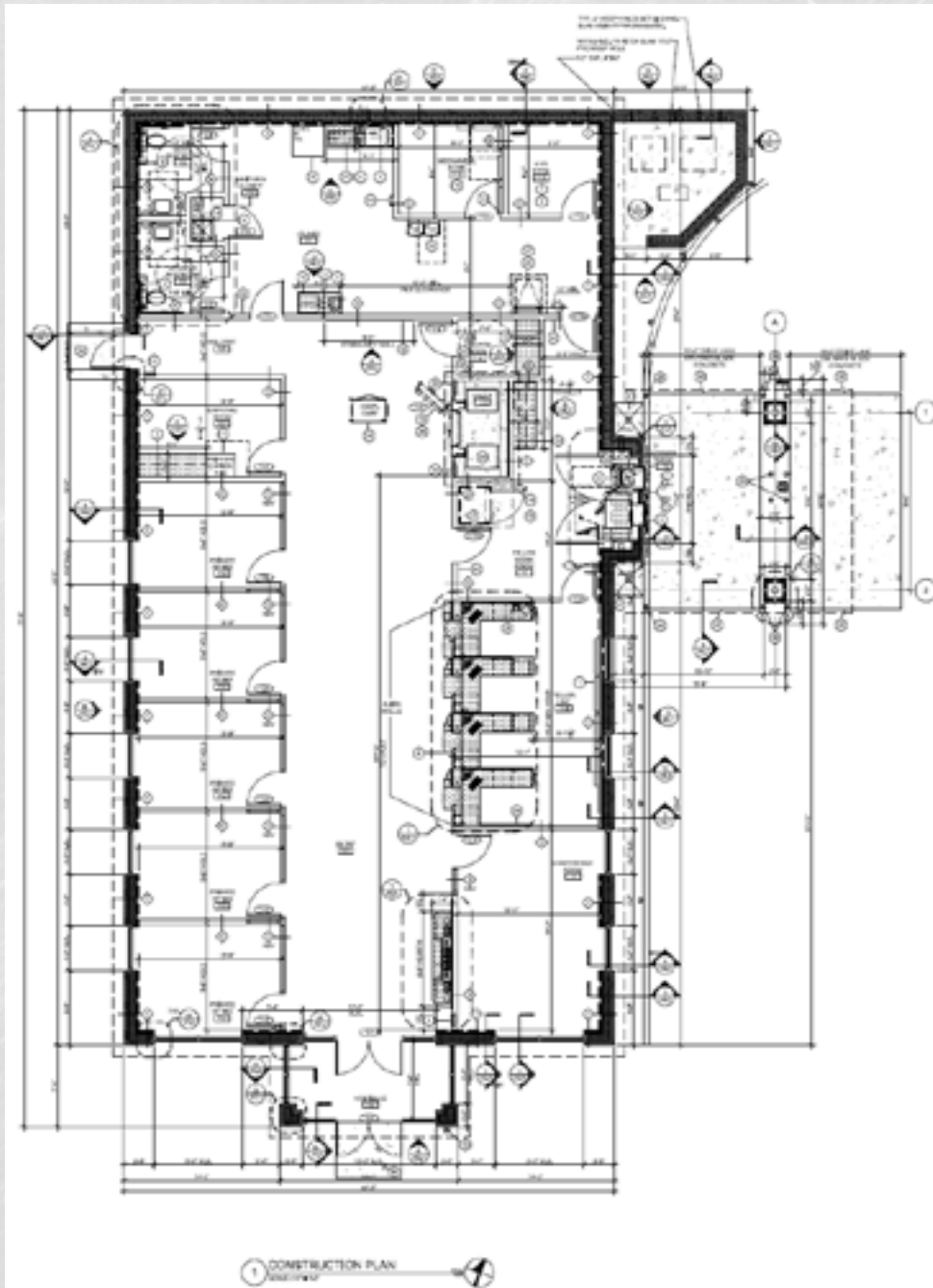


WALK SCORE

64

FLOOR/SITE PLAN

OFFERING APPROXIMATELY **3,848 SF** OF PRIME RETAIL SPACE





Mike Horner

+1 206 607 1751

mike.horner@am.jll.com

Ryan Jones

+1 206 607 1741

ryan.jones@am.jll.com