



RETAIL PROPERTY FOR SALE

SHERWIN WILLIAMS
217 Randolph Street, Charleston, WV 25302

Presented By:
MATT WEBER
Senior Advisor
248.702.0285
mweber@encorereis.com

DENO BISTOLARIDES
Managing Partner
248.702.0288
denob@encorereis.com

In Association With:
Cambridge Capital Advisors, LLC
WV Broker of Record
License #WV0029519

TABLE OF CONTENTS

Confidentiality & Disclaimer

All materials and information received or derived from Encore Real Estate Investment Services, LLC its directors, officers, agents, advisors, affiliates and/or any third party sources are provided without representation or warranty as to completeness, veracity, or accuracy, condition of the property, compliance or lack of compliance with applicable governmental requirements, developability or suitability, financial performance of the property, projected financial performance of the property for any party's intended use or any and all other matters.

Neither Encore Real Estate Investment Services, LLC its directors, officers, agents, advisors, or affiliates makes any representation or warranty, express or implied, as to accuracy or completeness of the any materials or information provided, derived, or received. Materials and information from any source, whether written or verbal, that may be furnished for review are not a substitute for a party's active conduct of its own due diligence to determine these and other matters of significance to such party. Encore Real Estate Investment Services, LLC will not investigate or verify any such matters or conduct due diligence for a party unless otherwise agreed in writing.

EACH PARTY SHALL CONDUCT ITS OWN INDEPENDENT INVESTIGATION AND DUE DILIGENCE.

Any party contemplating or under contract or in escrow for a transaction is urged to verify all information and to conduct their own inspections and investigations including through appropriate third party independent professionals selected by such party. All financial data should be verified by the party including by obtaining and reading applicable documents and reports and consulting appropriate independent professionals. Encore Real Estate Investment Services, LLC makes no warranties and/or representations regarding the veracity, completeness, or relevance of any financial data or assumptions. Encore Real Estate Investment Services, LLC does not serve as a financial advisor to any party regarding any proposed transaction. All data and assumptions regarding financial performance, including that used for financial modeling purposes, may differ from actual data or performance. Any estimates of market rents and/or projected rents that may be provided to a party do not necessarily mean that rents can be established at or increased to that level. Parties must evaluate any applicable contractual and governmental limitations as well as market conditions, vacancy factors and other issues in order to determine rents from or for the property.

Legal questions should be discussed by the party with an attorney. Tax questions should be discussed by the party with a certified public accountant or tax attorney. Title questions should be discussed by the party with a title officer or attorney. Questions regarding the condition of the property and whether the property complies with applicable governmental requirements should be discussed by the party with appropriate engineers, architects, contractors, other consultants and governmental agencies. All properties and services are marketed by Encore Real Estate Investment Services, LLC in compliance with all applicable fair housing and equal opportunity laws.

Contents

EXECUTIVE SUMMARY	3
INCOME & EXPENSES	4
LOCATION OVERVIEW	5
SHW NEW TO	6
ADDITIONAL PHOTOS	7
AERIAL MAP (FULL PAGE)	8
LOCATION MAPS (FULL PAGE)	9
REGIONAL MAP (FULL PAGE)	10
DEMOGRAPHICS REPORT	11
DEMOGRAPHICS MAP	12

SHERWIN WILLIAMS

217 Randolph Street | Charleston, WV 25302

RETAIL PROPERTY FOR SALE

CLICK ON THE FOLLOWING LINKS:



Google Map



Street View

EXECUTIVE SUMMARY



OFFERING SUMMARY

List Price:	\$950,000
NOI:	\$52,216
Cap Rate:	5.5%
Land Acreage:	0.22 Acres
Year Built:	1970
Building Size:	7,600
Price / SF:	\$125.00

LEASE SUMMARY

Lease Type:	Double Net
Taxes / Insurance / CAM:	Tenant Responsibility
Roof / Structure:	Landlord Responsibility
Term Remaining:	12 Years
Original Lease Term:	10 Years
Commencement Date:	8/1/1970
Current Term Expiration:	7/31/2030
Options:	(3) Five-Year Options
Increases:	In Options
Guarantor:	Corporate Guarantee

PROPERTY HIGHLIGHTS

- Sherwin Williams Recently Extended The Lease For 10 Years
- Double Net Lease - Minimal Landlord Responsibilities
- Long Term Tenancy - Sherwin Has Occupied The Site Since 1970
- Sherwin Williams: NYSE: SHW
- Standard & Poor's: BBB
- Lease Supports (2) Five-Year Options
- Charleston is The Largest City and Capital of West Virginia
- Over 71,000 People Within 5 Miles of Subject Property
- 5 Mile Average Household Income Exceeds \$64,000
- Subject Property is Located At The Signalized Intersection of Randolph Street & Ohio Avenue

INCOME & EXPENSES

INCOME SUMMARY	SHERWIN WILLIAMS	PER SF
Sherwin Williams Base Rent	\$53,955	\$7.10
Gross Income	\$53,955	\$7.10
EXPENSE SUMMARY	SHERWIN WILLIAMS	PER SF
Insurance Expense	\$1,200	\$0.16
Business and Occupation Tax	\$539	\$0.07
Gross Expenses	\$1,739	\$0.23
Net Operating Income	\$52,216	\$6.87

LOCATION OVERVIEW



LOCATION OVERVIEW

Charleston is known as the cultural, recreational, and business capital of the Appalachian Mountains. Charleston is the most populous city and the capital of West Virginia. Located at the confluence of the Elk and Kanawha rivers, the population during the 2016 Census Estimate was 49,138. The Charleston metropolitan area as a whole had 217,916 residents. Charleston is the center of government, commerce, and industry for Kanawha County, of which it is the county seat.

Once a frontier town and home to Daniel Boone, today Charleston is the historic, sophisticated capital of West Virginia and home to a variety of exciting cultural and recreational attractions. The State Capitol, with its gleaming 23-karat gold dome and classic 20th-century architecture, is truly a sight to see. The city lies at the intersection of Interstates 79, 77, 64, and also where the Kanawha and Elk Rivers meet. Charleston is about 162 miles (261 km) southeast of Columbus, Ohio, 315 miles (507 km) west of Richmond, Virginia, 228 miles (367 km) southwest of Pittsburgh, Pennsylvania, 247 miles (398 km) east of Louisville, Kentucky, 264 miles (425 km) north of Charlotte, North Carolina, 252 miles (406 km) south of Cleveland, Ohio, and 210 miles (340 km) southeast of Cincinnati, Ohio.

SHERWIN WILLIAMS TENANT OVERVIEW



OVERVIEW

Company:	Sherwin Williams
Total Revenue:	\$14.98 Billion - 2017
Headquarters:	Cleveland, OH
Website:	Sherwin-Williams.com
NYSE	SHW
S&P Rating	Investment Grade: BBB
Sherwin Williams Income Statement	https://finance.yahoo.com/quote/SHW/financials?p=SHW

TENANT HIGHLIGHTS

- Founded in 1866 - Sherwin Williams Has Over 4,620 Stores
- Sherwin Williams Acquired Valspar in June 2017 For \$9 Billion
- 2018 First Quarter: Consolidated net sales increased 43.6% in the quarter to a record \$3.97 billion



TENANT OVERVIEW

The Sherwin-Williams Company develops, manufactures, distributes, and sells paints, coatings, and related products to professional, industrial, commercial, and retail customers primarily in North and South America, the Caribbean, Europe, and Asia.

The company operates in four segments: Paint Stores Group, Consumer Group, Global Finishes Group, and Latin America Coatings Group. It offers architectural paint and coatings, protective and marine products, automotive finishes and refinish products, original equipment manufacturer product finishes, and related items under the Sherwin-Williams brand. The company also licenses technology and trade names.

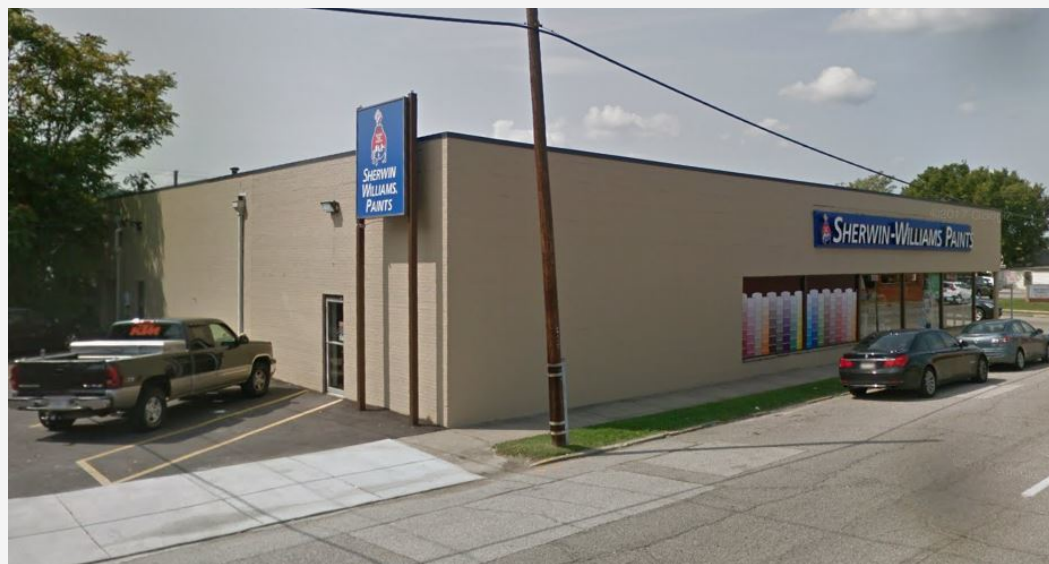
As of 2017, its Paint Stores Group segment operated 4,620 company-operated specialty paint stores; Global Finishes Group segment operated 288 company-operated branches; and Latin America Coatings Group segment operated 339 company-operated stores. The company also sells its products through direct sales staff and outside sales representatives to retailers, dealers, jobbers, licensees and other third party distributors. The Sherwin-Williams Company was founded in 1866 and is headquartered in Cleveland, Ohio.

SHERWIN WILLIAMS

217 Randolph Street | Charleston, WV 25302

RETAIL PROPERTY FOR SALE

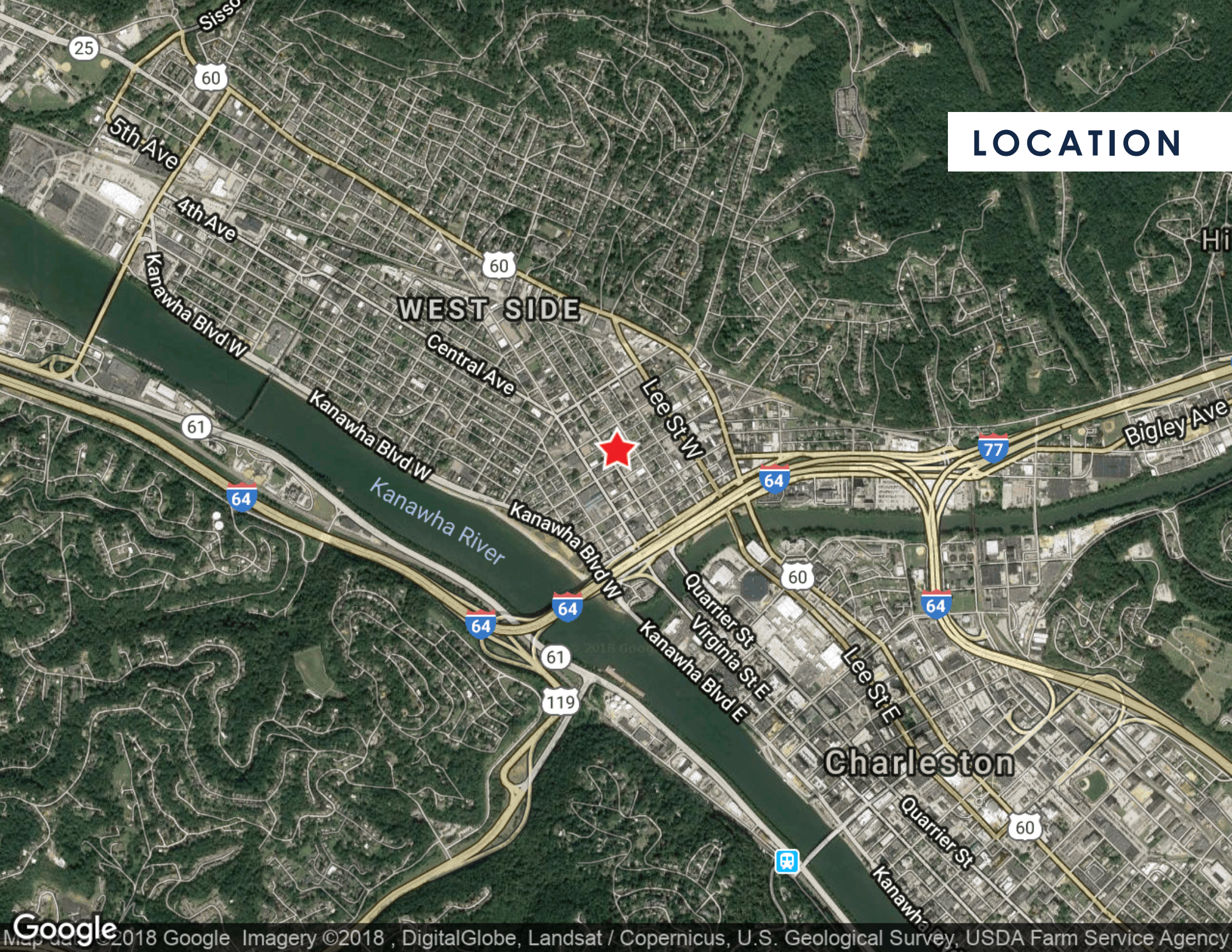
ADDITIONAL PHOTOS



AERIAL

Sherwin Williams

LOCATION



REGIONAL

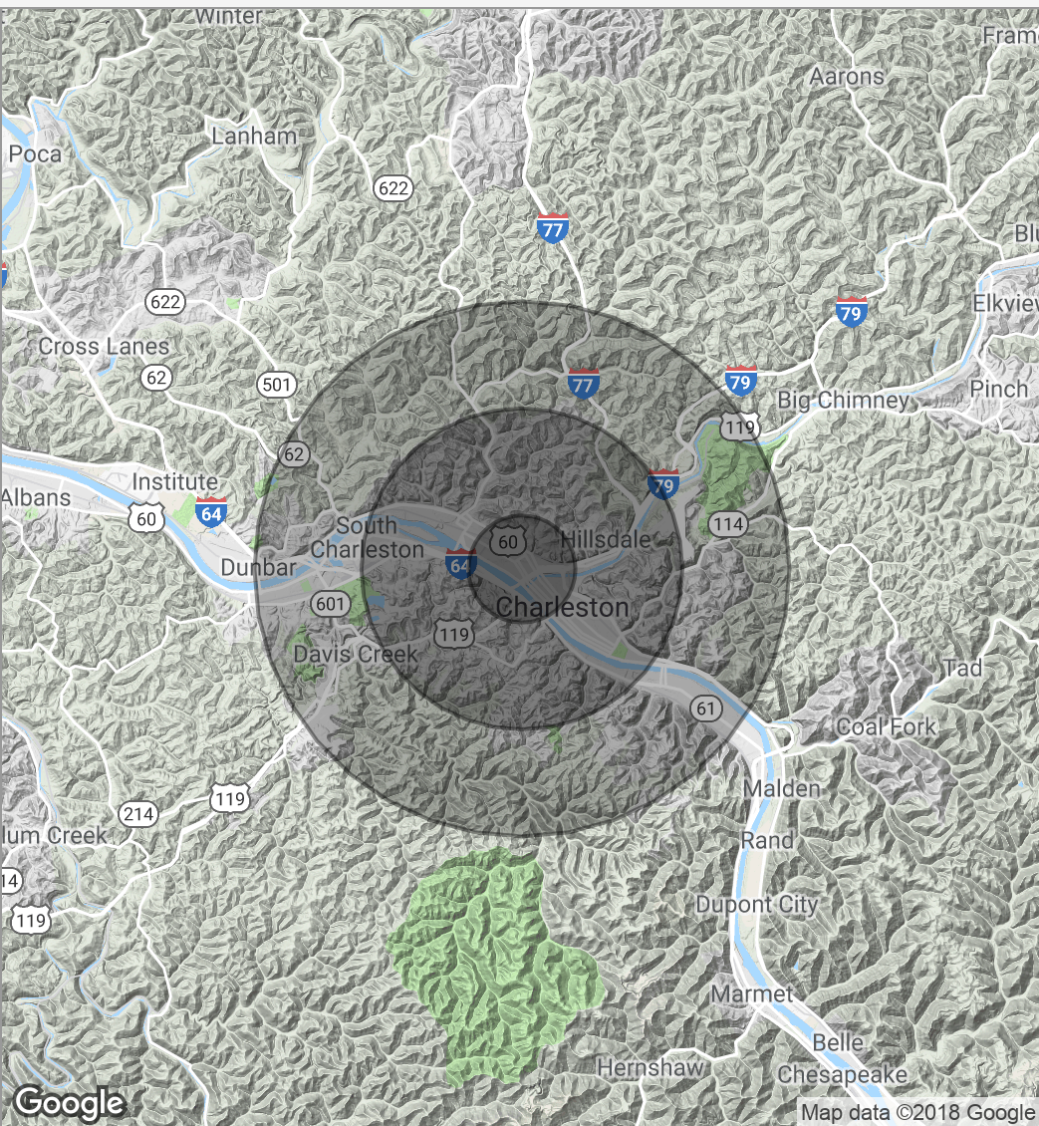


DEMOGRAPHICS REPORT

	1 MILE	3 MILES	5 MILES
Total population	10,303	47,866	77,133
Median age	43.3	42.9	42.8
Median age (Male)	40.0	40.8	41.1
Median age (Female)	46.8	44.9	43.9
Total households	5,074	23,176	35,630
Total persons per HH	2.0	2.1	2.2
Average HH income	\$48,965	\$62,370	\$66,166
Average house value	\$160,684	\$185,871	\$181,175

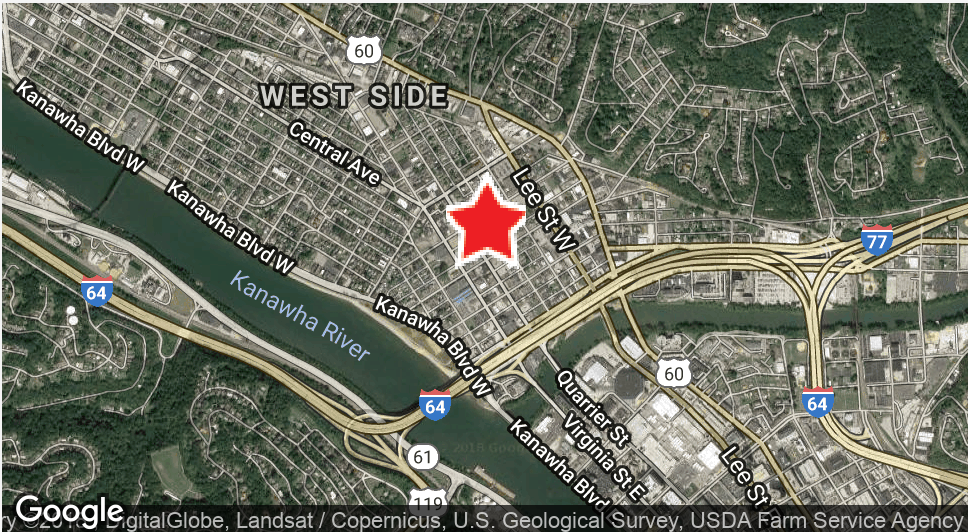
* Demographic data derived from 2010 US Census

DEMOGRAPHICS MAP



POPULATION	1 MILE	3 MILES	5 MILES
Total population	10,303	47,866	77,133
Median age	43.3	42.9	42.8
Median age (male)	40.0	40.8	41.1
Median age (Female)	46.8	44.9	43.9
HOUSEHOLDS & INCOME	1 MILE	3 MILES	5 MILES
Total households	5,074	23,176	35,630
# of persons per HH	2.0	2.1	2.2
Average HH income	\$48,965	\$62,370	\$66,166
Average house value	\$160,684	\$185,871	\$181,175

* Demographic data derived from 2010 US Census



RETAIL PROPERTY FOR SALE

SHERWIN WILLIAMS

217 Randolph Street, Charleston, WV 25302



ENCORE REAL ESTATE INVESTMENT SERVICES

30500 Northwestern Highway Suite 400

Farmington Hills, MI 48334

Encoreinvestmentrealestate.com

Presented By:

MATT WEBER

Senior Advisor

248.702.0285

mweber@encorereis.com